

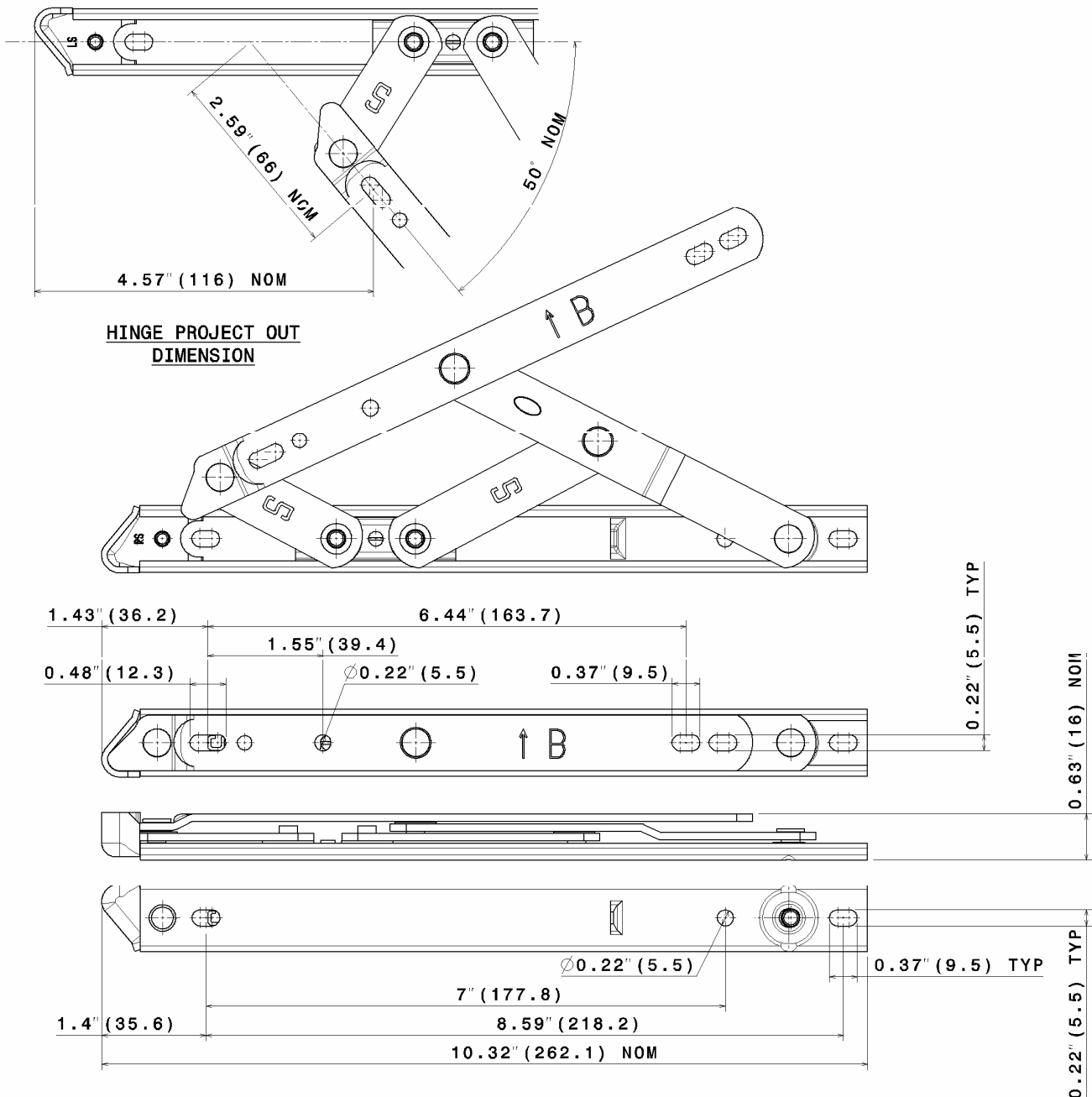
HINGES

Sterling STORM® HINGES

SECTION 7.2 SHEET 1 of 8

ISSUE: September, 2007

ASSEMBLY SHEET - STORMB10 Top Hung Hinge



Hinge Code	Max. Vent Weight lb - (Kg)	Min. Vent Height in - (mm)	Max. Vent Height in - (mm)	Max. Vent Width in - (mm)	Hardware Cavity in - (mm)
STORMB10	81 (37)	10.5 (267)	25 (635)	See profile manufacturers recommendations	0.629-0.708 (16-18)

Not to Scale, All dimensions in inches (mm)

It is the responsibility of the user to ensure that this document is at the latest issue.

Due to our policy of continual product improvement we reserve the right to alter specifications without notice.

It is the responsibility of the window manufacturer to ensure that the finished window meets the required performance and safety specification.

© SECURISTYLE LTD 2006



Securistyle Ltd.
Kingsmead Industrial Estate
Princess Elizabeth Way, Cheltenham,
Gloucestershire, GL51 7RE
Tel: +44 (0) 1242 221200
Fax: +44 (0) 1242 520828
Web: www.securistyle.co.uk

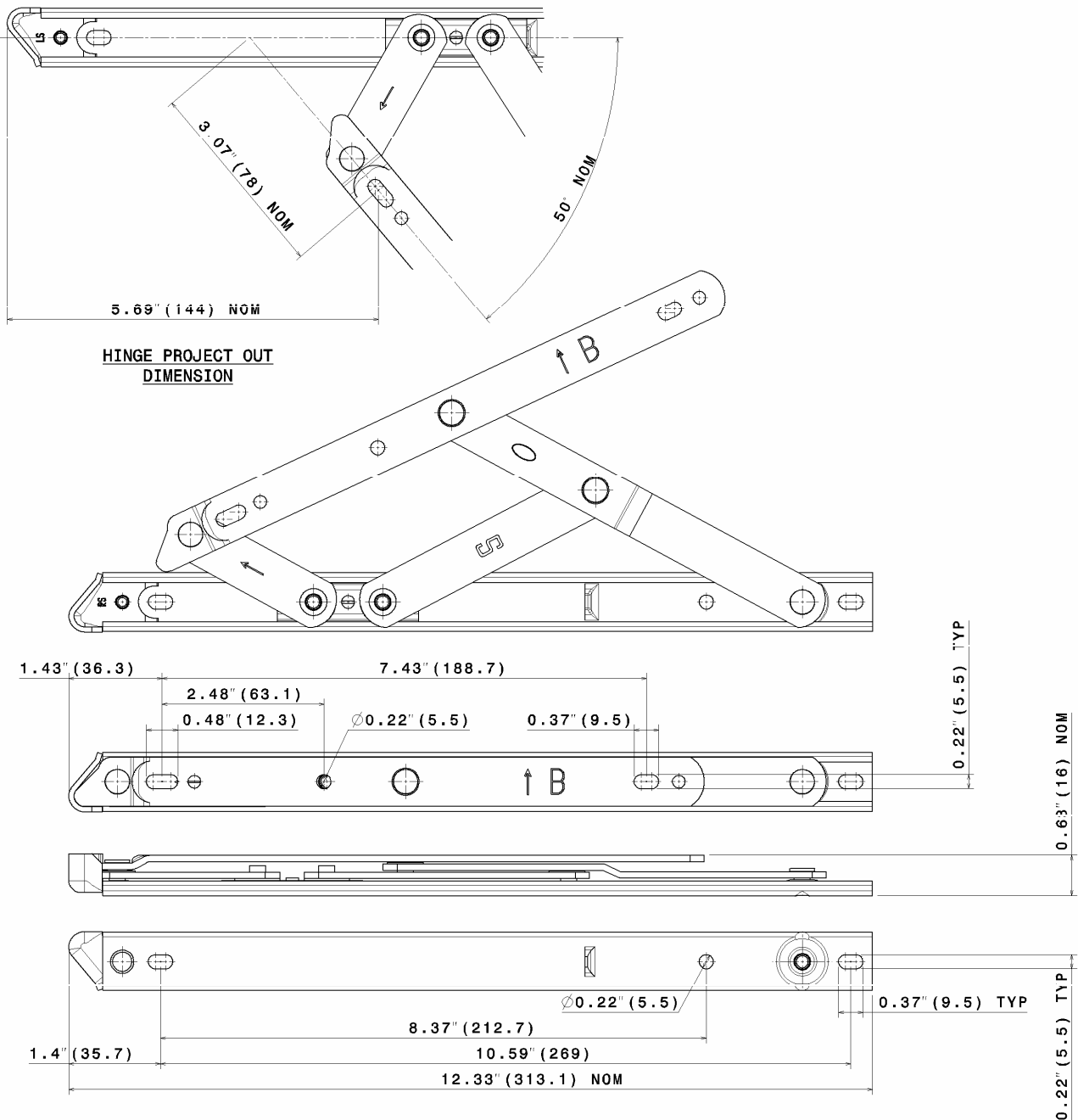
HINGES

Sterling STORM® HINGES

SECTION 7.2 SHEET 2 of 8

ISSUE: September, 2007

ASSEMBLY SHEET - STORMB12 Top Hung Hinge



Hinge Code	Max. Vent Weight lb - (Kg)	Min. Vent Height in - (mm)	Max. Vent Height in - (mm)	Max. Vent Width in - (mm)	Hardware Cavity in - (mm)
STORMB12	99 (45)	25 (635)	31 (787)	See profile manufacturers recommendations	0.629-0.708 (16-18)

Not to Scale, All dimensions in inches (mm)

It is the responsibility of the user to ensure that this document is at the latest issue.

Due to our policy of continual product improvement we reserve the right to alter specifications without notice.

It is the responsibility of the window manufacturer to ensure that the finished window meets the required performance and safety specification.

© SECURISTYLE LTD 2006



Securistyle Ltd.
Kingsmead Industrial Estate
Princess Elizabeth Way, Cheltenham,
Gloucestershire, GL51 7RE
Tel: +44 (0) 1242 221200
Fax: +44 (0) 1242 520828
Web: www.securistyle.co.uk

HINGES

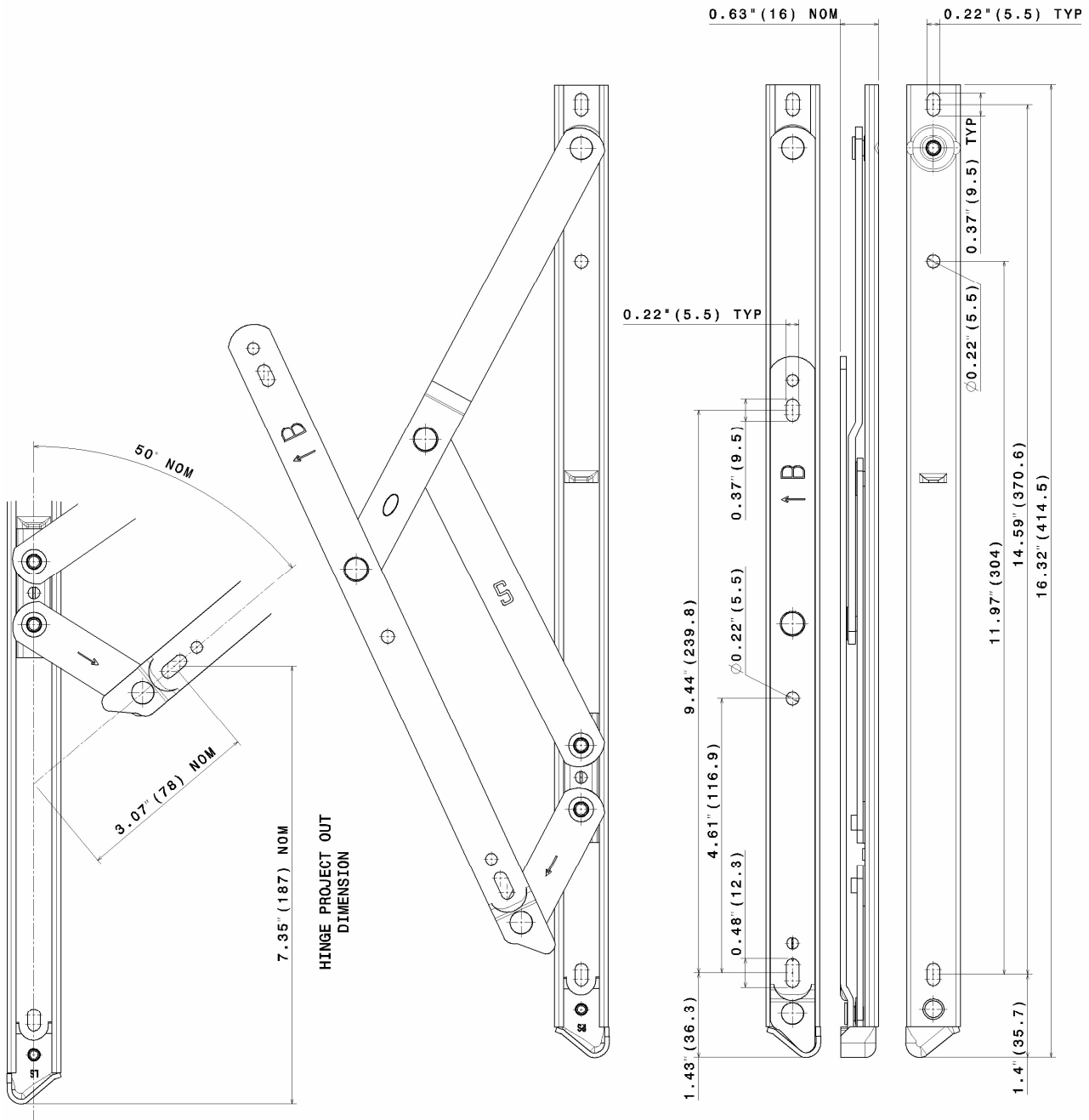
Sterling STORM® HINGES

SECTION 7.2 SHEET 3 of 8

ISSUE: September, 2007

ASSEMBLY SHEET - STORMB16

Top Hung Hinge



Hinge Code	Max. Vent Weight lb - (Kg)	Min. Vent Height in - (mm)	Max. Vent Height in - (mm)	Max. Vent Width in - (mm)	Hardware Cavity in - (mm)
STORMB16	121 (55)	30.9 (787)	42.9 (1090)	See profile manufacturers recommendations	0.629-0.708 (16-18)

Not to Scale, All dimensions in inches (mm)

It is the responsibility of the user to ensure that this document is at the latest issue.

Due to our policy of continual product improvement we reserve the right to alter specifications without notice.

It is the responsibility of the window manufacturer to ensure that the finished window meets the required performance and safety specification.

© SECURISTYLE LTD 2006



Securistyle Ltd.
Kingsmead Industrial Estate
Princess Elizabeth Way, Cheltenham,
Gloucestershire, GL51 7RE
Tel: +44 (0) 1242 221200
Fax: +44 (0) 1242 520828
Web: www.securistyle.co.uk

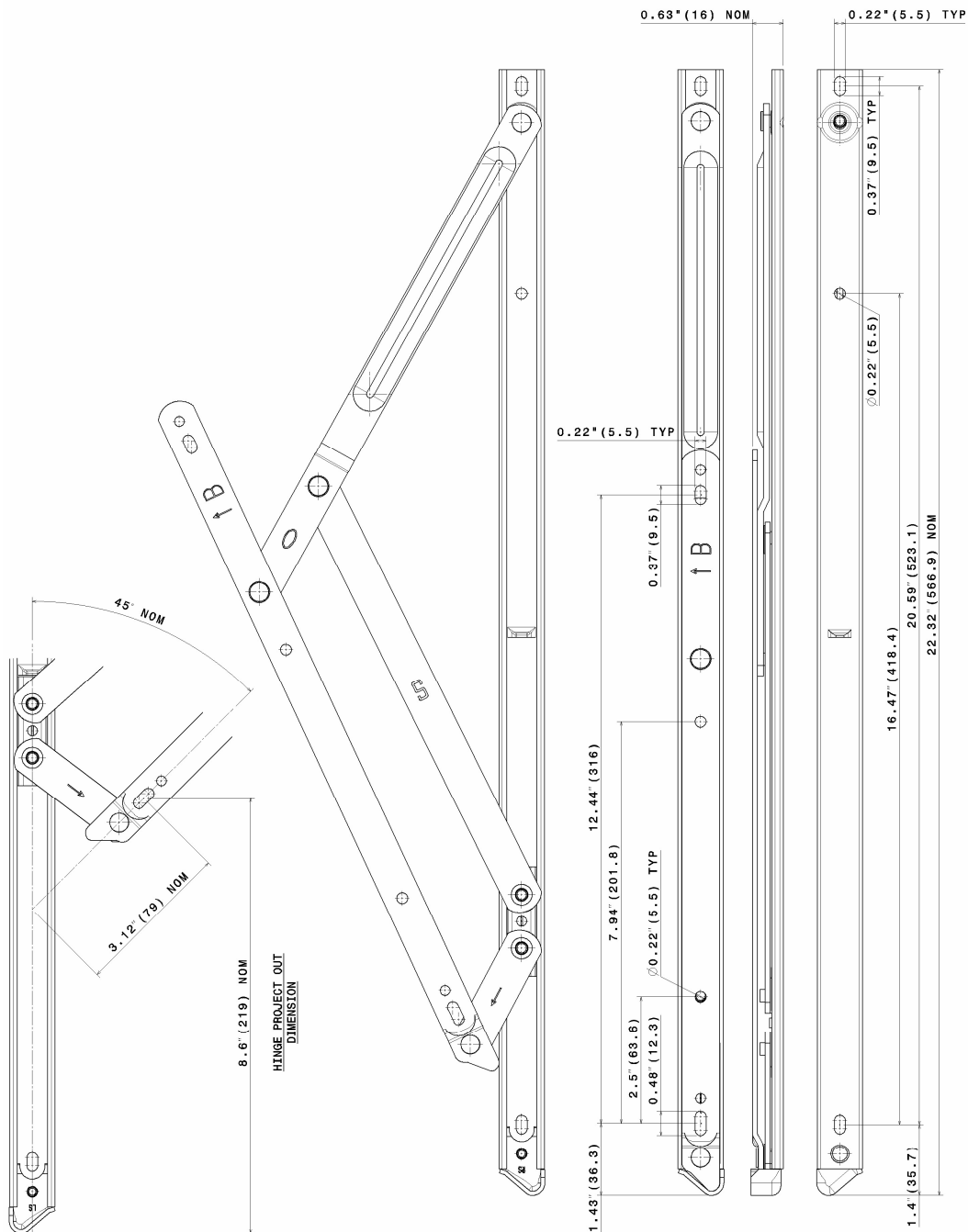
HINGES

Sterling STORM® HINGES

SECTION 7.2 SHEET 4 of 8

ISSUE: September, 2007

ASSEMBLY SHEET - STORMB22 Top Hung Hinge



Hinge Code	Max. Vent Weight lb - (Kg)	Min. Vent Height in - (mm)	Max. Vent Height in - (mm)	Max. Vent Width in - (mm)	Hardware Cavity in - (mm)
STORMB22	165 (75)	42.9 (1090)	59 (1500)	See profile manufacturers recommendations	0.629-0.708 (16-18)

Not to Scale, All dimensions in inches (mm)

It is the responsibility of the user to ensure that this document is at the latest issue.

Due to our policy of continual product improvement we reserve the right to alter specifications without notice.

It is the responsibility of the window manufacturer to ensure that the finished window meets the required performance and safety specification.

© SECURISTYLE LTD 2006



Securistyle Ltd.
Kingsmead Industrial Estate
Princess Elizabeth Way, Cheltenham,
Gloucestershire, GL51 7RE
Tel: +44 (0) 1242 221200
Fax: +44 (0) 1242 520828
Web: www.securistyle.co.uk

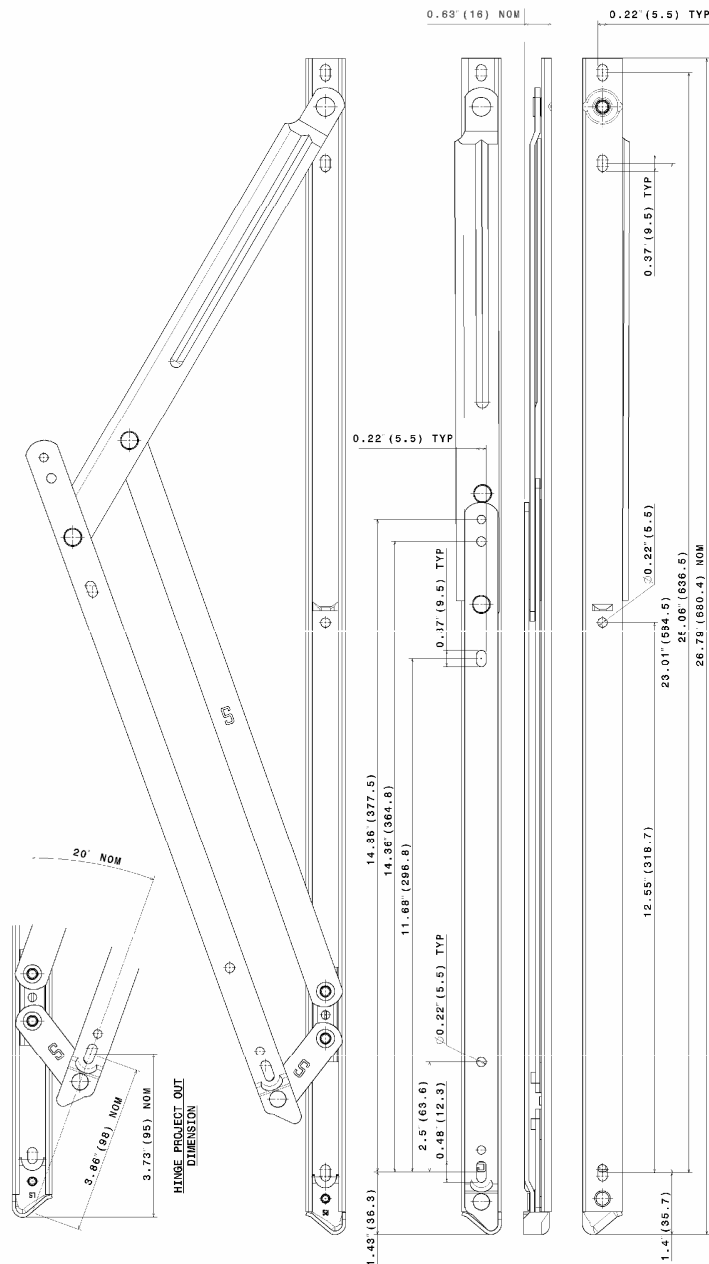
HINGES

Sterling STORM® HINGES

SECTION 7.2 SHEET 5 of 8

ISSUE: September, 2007

ASSEMBLY SHEET - STORMB26 Top Hung Hinge



Hinge Code	Max. Vent Weight lb - (Kg)	Min. Vent Height in - (mm)	Max. Vent Height in - (mm)	Max. Vent Width in - (mm)	Hardware Cavity in - (mm)
STORMB26	264 (120)	50 (1270)	87.0 (2200)	See profile manufacturers recommendations	0.629-0.708 (16-18)

Not to Scale, All dimensions in inches (mm)

It is the responsibility of the user to ensure that this document is at the latest issue.

Due to our policy of continual product improvement we reserve the right to alter specifications without notice.

It is the responsibility of the window manufacturer to ensure that the finished window meets the required performance and safety specification.

© SECURISTYLE LTD 2006



Securistyle Ltd.
Kingsmead Industrial Estate
Princess Elizabeth Way, Cheltenham,
Gloucestershire, GL51 7RE
Tel: +44 (0) 1242 221200
Fax: +44 (0) 1242 520828
Web: www.securistyle.co.uk

HINGES

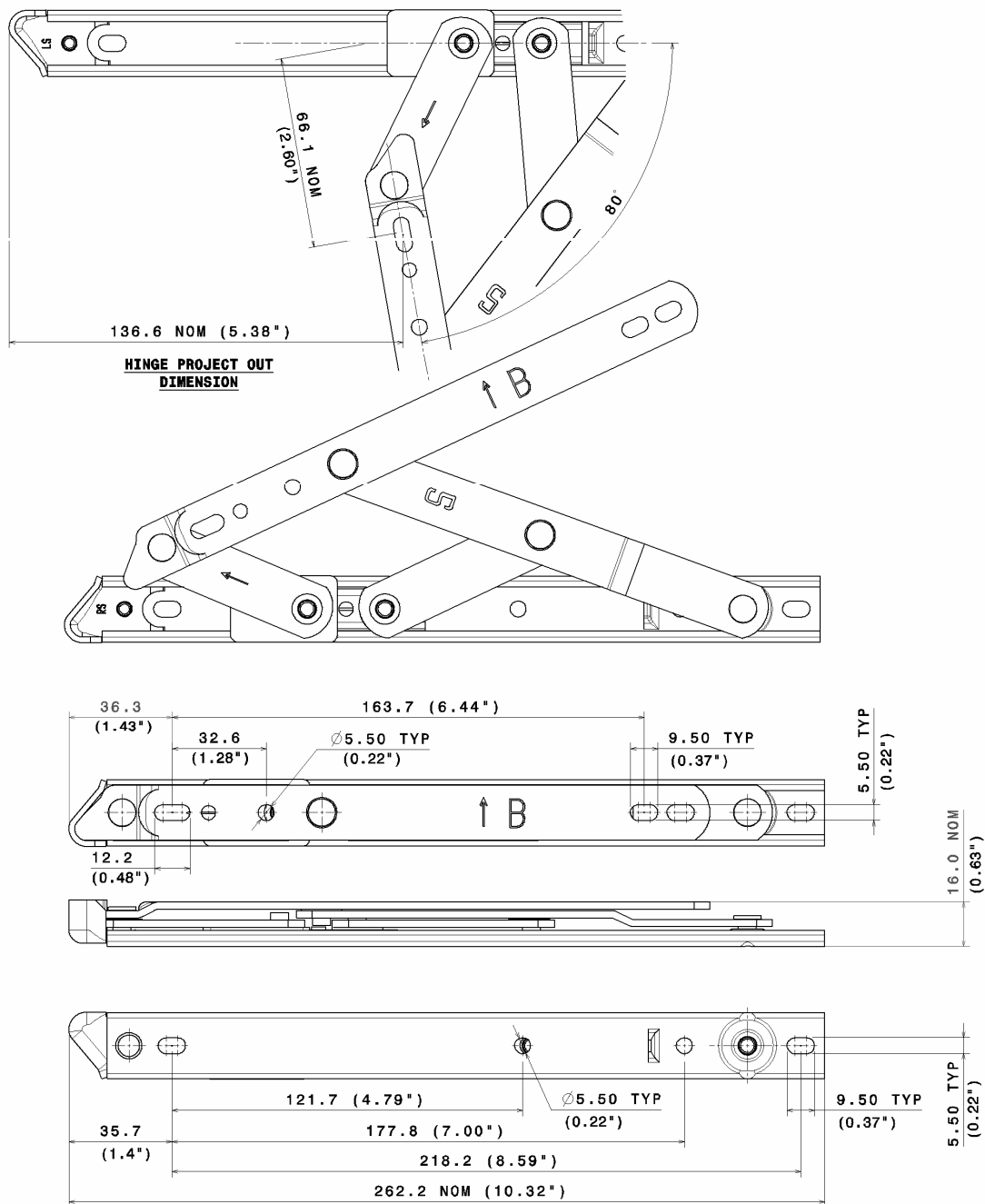
Sterling STORM® HINGES

SECTION 7.2 SHEET 6 of 8

ISSUE: September, 2007

ASSEMBLY SHEET - STORMBS10

Side Hung Hinge



Hinge Code	Max. Vent Weight lb - (Kg)	Min. Vent Width in - (mm)	Max. Vent Width in - (mm)	Max. Vent Height in - (mm)	Hardware Cavity in - (mm)
STORMBS10	83.6 (38.0)	11 (280)	26 (665)	See profile manufacturers recommendations	0.629-0.708 (16-18)

Not to Scale, All dimensions in inches (mm)

It is the responsibility of the user to ensure that this document is at the latest issue.

Due to our policy of continual product improvement we reserve the right to alter specifications without notice.

It is the responsibility of the window manufacturer to ensure that the finished window meets the required performance and safety specification.

© SECURISTYLE LTD 2006



Securistyle Ltd.
Kingsmead Industrial Estate
Princess Elizabeth Way, Cheltenham,
Gloucestershire, GL51 7RE
Tel: +44 (0) 1242 221200
Fax: +44 (0) 1242 520828
Web: www.securistyle.co.uk

HINGES

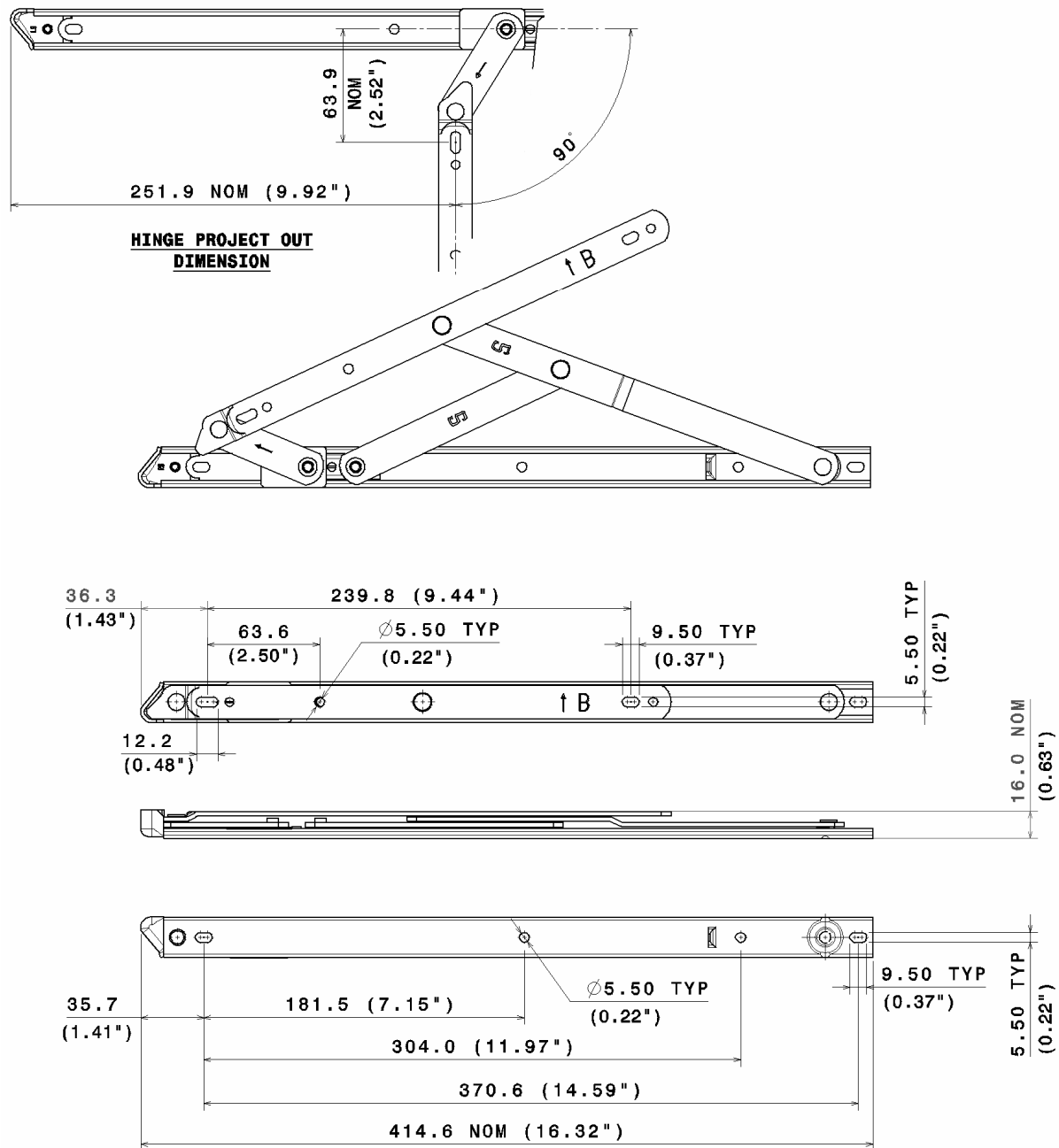
Sterling STORM® HINGES

SECTION 7.2 SHEET 7 of 8

ISSUE: September, 2007

ASSEMBLY SHEET - STORMBS16

Side Hung Hinge



Hinge Code	Max. Vent Weight lb - (Kg)	Min. Vent Width in - (mm)	Max. Vent Width in - (mm)	Max. Vent Height in - (mm)	Hardware Cavity in - (mm)
STORMBS16	103 (47)	18 (457)	33 (838)	See profile manufacturers recommendations	0.629-0.708 (16-18)

Not to Scale, All dimensions in inches (mm)

It is the responsibility of the user to ensure that this document is at the latest issue.

Due to our policy of continual product improvement we reserve the right to alter specifications without notice.

It is the responsibility of the window manufacturer to ensure that the finished window meets the required performance and safety specification.

© SECURISTYLE LTD 2006



Securistyle Ltd.
Kingsmead Industrial Estate
Princess Elizabeth Way, Cheltenham,
Gloucestershire, GL51 7RE
Tel: +44 (0) 1242 221200
Fax: +44 (0) 1242 520828
Web: www.securistyle.co.uk

HINGES

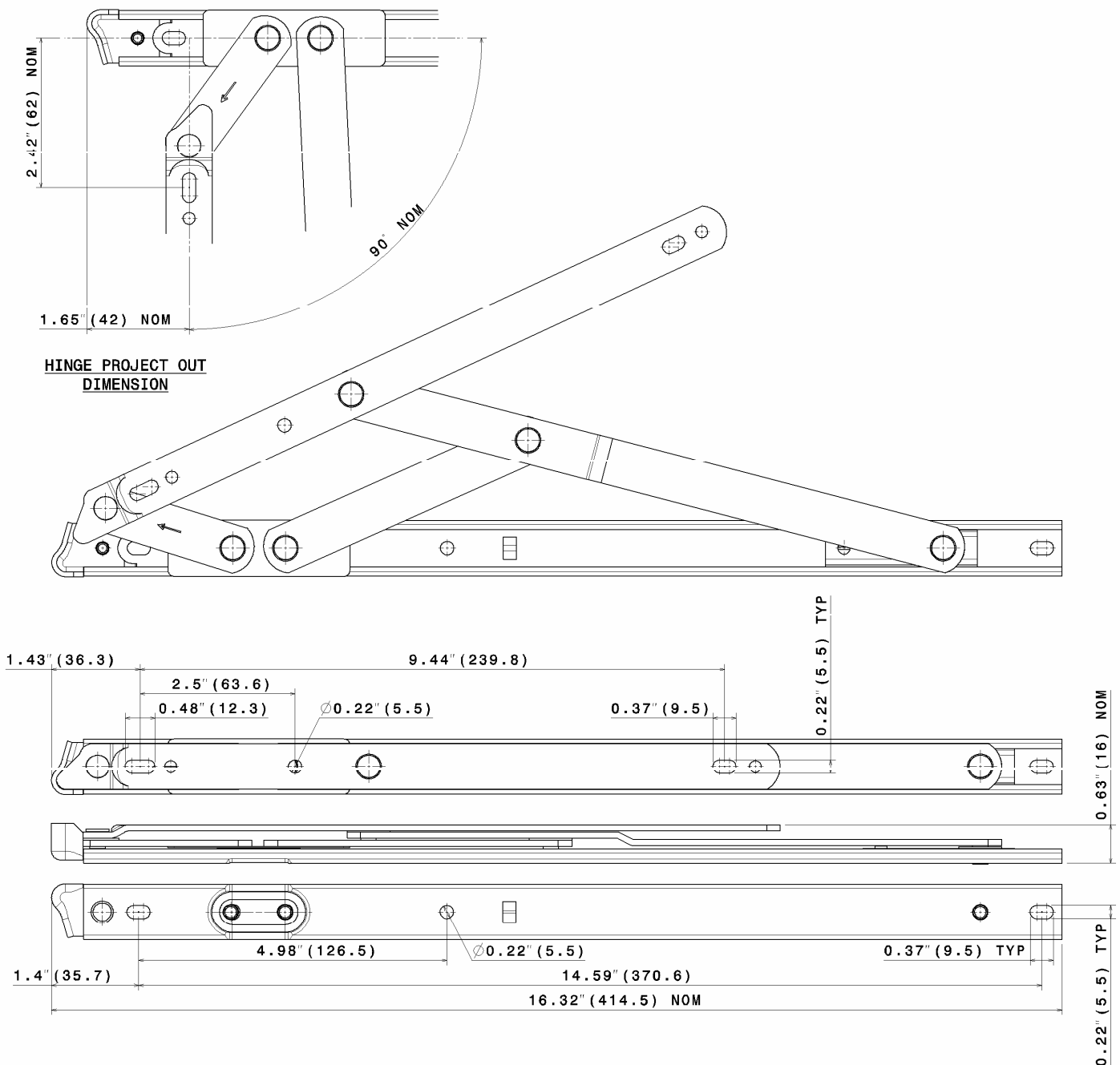
Sterling STORM® HINGES

SECTION 7.2 SHEET 8 of 8

ISSUE: September, 2007

ASSEMBLY SHEET - STORME16

Side Hung Hinge



Hinge Code	Max. Vent Weight lb - (Kg)	Min. Vent Width in - (mm)	Max. Vent Width in - (mm)	Max. Vent Height in - (mm)	Hardware Cavity in - (mm)
STORME16	103 (47)	18 (457)	33 (838)	See profile manufacturers recommendations	0.629-0.708 (16-18)

Not to Scale, All dimensions in inches (mm)

It is the responsibility of the user to ensure that this document is at the latest issue.

Due to our policy of continual product improvement we reserve the right to alter specifications without notice.

It is the responsibility of the window manufacturer to ensure that the finished window meets the required performance and safety specification.

© SECURISTYLE LTD 2006



Securistyle Ltd.
Kingsmead Industrial Estate
Princess Elizabeth Way, Cheltenham,
Gloucestershire, GL51 7RE
Tel: +44 (0) 1242 221200
Fax: +44 (0) 1242 520828
Web: www.securistyle.co.uk