

MiNeon[®] PRO

SIGNAGE - Letters and logos

D6 F6

the light of
brilliant sites



The ultra-thin LED solution to follow the contours of your logos and signs

3 YEARS
40.000hrs
L50

- Section 6mm diameter and 8mm cutting resolution
- Choose between Flat or Dome top
- Made of robust silicone. IP67

LEDIT YAKI - LeLighthouse
3 allée des Vignes
91160 Champlan - France
www.yaki.com
info@yaki.com

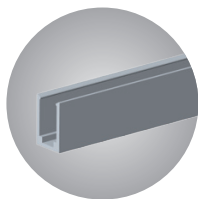
LEDIT YAKI
Rm 2107-2108, Guangzhou Exchange Square
No.268 DongFengZhong Rd
Guangzhou, Guangdong, 510030 CHINA
www.ledit-yaki.com
sales@leditinternational.com





MiNeon[®] D6

3 YEARS*
40.000hrs*
L50



Installation profile



IP67



MAX 2,5M
IN SERIES



CUTTABLE
EVERY 8MM



12V



120 LED./ML



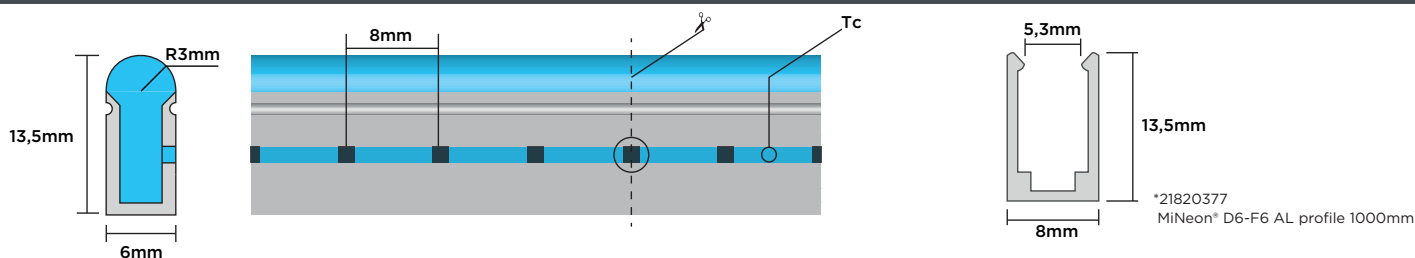
-40/+80°C

TECHNICAL DATA

Code	Designation	Color Temperature / Wavelength	Typical power (W/m)	Lumen output (lm/m)	Efficiency (lm/W)	Max length in series (m/ft)	Cutting unit (mm/in)
21820368	MiNeon Pro D6 WDL L120 8mm 12V 5000mm milky white	WDL 5500-6000K	12	400	33	2,5/8,2	8/0,3"
21820369	MiNeon Pro D6 NW L120 8mm 12V 5000mm milky white	NW 3500-4000K	12	380	32	2,5/8,2	8/0,3"
21820370	MiNeon Pro D6 WW L120 8mm 12V 5000mm milky white	WW 2400-3000K	12	320	27	2,5/8,2	8/0,3"
21820371	MiNeon Pro D6 R L120 8mm 12V 5000mm milky white	R 620-630nm	12	50	4	2,5/8,2	8/0,3"
21820372	MiNeon Pro D6 G L120 8mm 12V 5000mm milky white	G 520-530nm	12	230	19	2,5/8,2	8/0,3"
21820373	MiNeon Pro D6 B L120 8mm 12V 5000mm milky white	B 450-460nm	12	30	2	2,5/8,2	8/0,3"
21820408	MiNeon Pro D6 Y L120 8mm 12V 5000mm milky white	Y 575-585nm	12	180	15	2,5/8,2	8/0,3" *
21820409	MiNeon Pro D6 O L120 8mm 12V 5000mm milky white	O 600-610nm	12	100	8	2,5/8,2	8/0,3" *
20020316	MiNeon Pro D6 P L120 8mm 12V 5000mm milky white	P 1400-1600K	9,6	140	14	2,5/8,2	8/0,3" *
21820398	MiNeon Pro D6 R L120 8mm 12V 5000mm	R 620-630nm	12	30	2	2,5/8,2	8/0,3"
21820399	MiNeon Pro D6 G L120 8mm 12V 5000mm	G 520-530nm	12	138	12	2,5/8,2	8/0,3"
21820400	MiNeon Pro D6 B L120 8mm 12V 5000mm	B 450-460nm	12	30	2	2,5/8,2	8/0,3"
21820410	MiNeon Pro D6 Y L120 8mm 12V 5000mm	Y 575-585nm	12	150	12	2,5/8,2	8/0,3" *

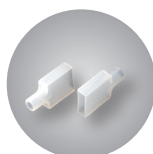
*These references have 1-year warranty, and 30.000 hours life time.

DIMENSIONS



ACCESSORIES

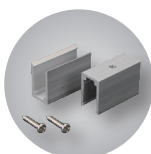
Code	Designation
21820374	MiNeon D6-F6 Front End cap(no wire) x10
21820375	MiNeon D6-F6 End cap x10
21820413	MiNeon D6 End cap Set (no wire)
21820376	MiNeon D6-F6 AL Mounting clip 20mm x20
21820377	MiNeon D6-F6 AL profile 1000mm
21820397	MiNeon cable Teflon 1x0,2mm ² transparent 100m
21820411	MiNeon PCB connector 100mm



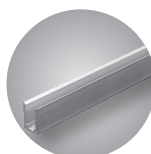
21820374



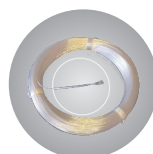
21820375



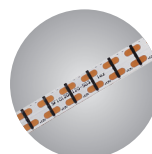
21820376



21820377



21820397

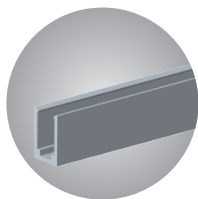


21820411



MiNeon[®] F6

3 YEARS
40.000hrs
L50



Installation profile



IP67



MAX 2,5M
IN SERIES



CUTTABLE
EVERY 8MM



12V



120 LED./ML

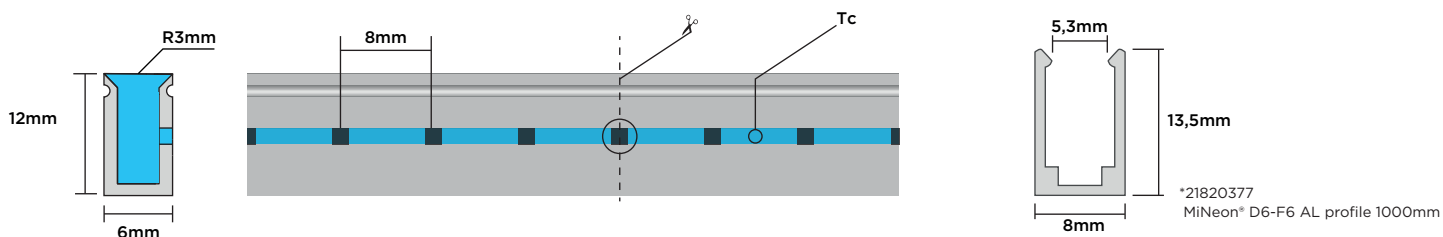


-40/+80°C

TECHNICAL DATA

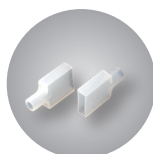
Code	Designation	Color Temperature / Wavelength	Typical power (W/m)	Lumen output (lm/m)	Efficiency (lm/W)	Max length in series (m/ft)	Cutting unit (mm/in)
21820386	MiNeon Pro F6 WDL L120 8mm 12V 5000mm milky white	○ WDL 5500-6500K	9,6	360	38	2,5/8,2	8/0,3"
21820387	MiNeon Pro F6 NW L120 8mm 12V 5000mm milky white	○ NW 3500-4000K	9,6	350	36	2,5/8,2	8/0,3"
21820388	MiNeon Pro F6 WW L120 8mm 12V 5000mm milky white	○ WW 2400-3000K	9,6	320	33	2,5/8,2	8/0,3"
21820389	MiNeon Pro F6 R L120 8mm 12V 5000mm milky white	● R 620-630nm	9,6	50	5	2,5/8,2	8/0,3"
21820390	MiNeon Pro F6 G L120 8mm 12V 5000mm milky white	● G 515-525nm	9,6	230	24	2,5/8,2	8/0,3"
21820391	MiNeon Pro F6 B L120 8mm 12V 5000mm milky white	● B 450-460nm	9,6	50	5	2,5/8,2	8/0,3"
21820404	MiNeon Pro F6 R L120 8mm 12V 5000mm	● R 620-630nm	9,6	30	3	2,5/8,2	8/0,3"
21820405	MiNeon Pro F6 G L120 8mm 12V 5000mm	● G 515-525nm	9,6	130	14	2,5/8,2	8/0,3"
21820406	MiNeon Pro F6 B L120 8mm 12V 5000mm	● B 450-460nm	9,6	30	3	2,5/8,2	8/0,3"

DIMENSIONS

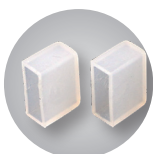


ACCESSORIES

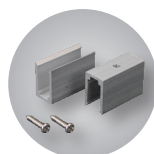
Code	Designation
21820374	MiNeon D6-F6 Front End cap(no wire) x10
21820375	MiNeon D6-F6 End cap x10
21820376	MiNeon D6-F6 AL Mounting clip 20mm x20
21820377	MiNeon D6-F6 AL profile 1000mm
21820397	MiNeon cable Teflon 1x0,2mm ² transparent 100m
21820411	MiNeon PCB connector 100mm



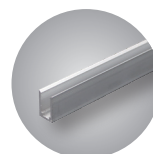
21820374



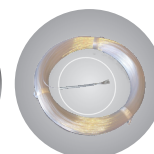
21820375



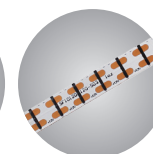
21820376



21820377



21820397

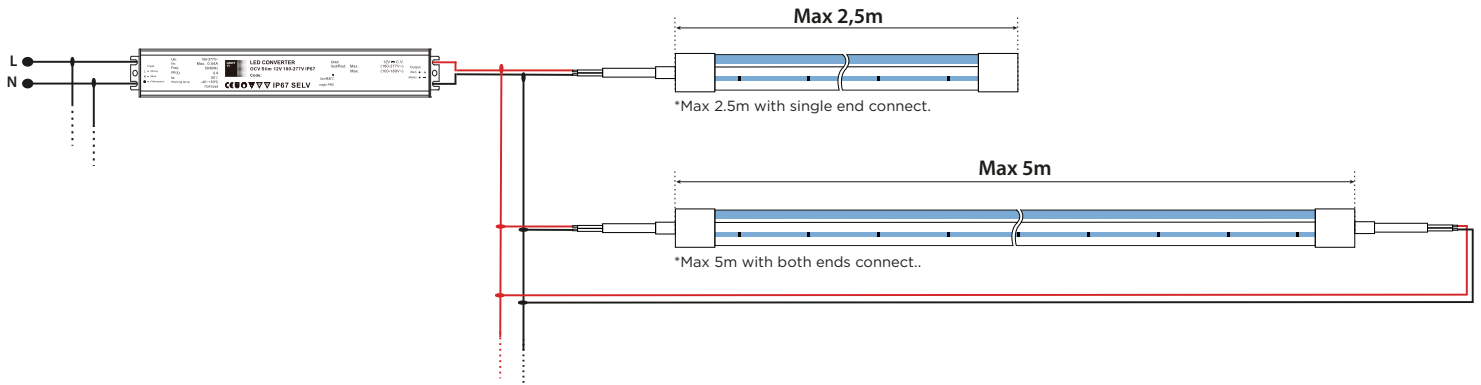


21820411

MiNeon[®] PRO

SIGNAGE - Letters and logos

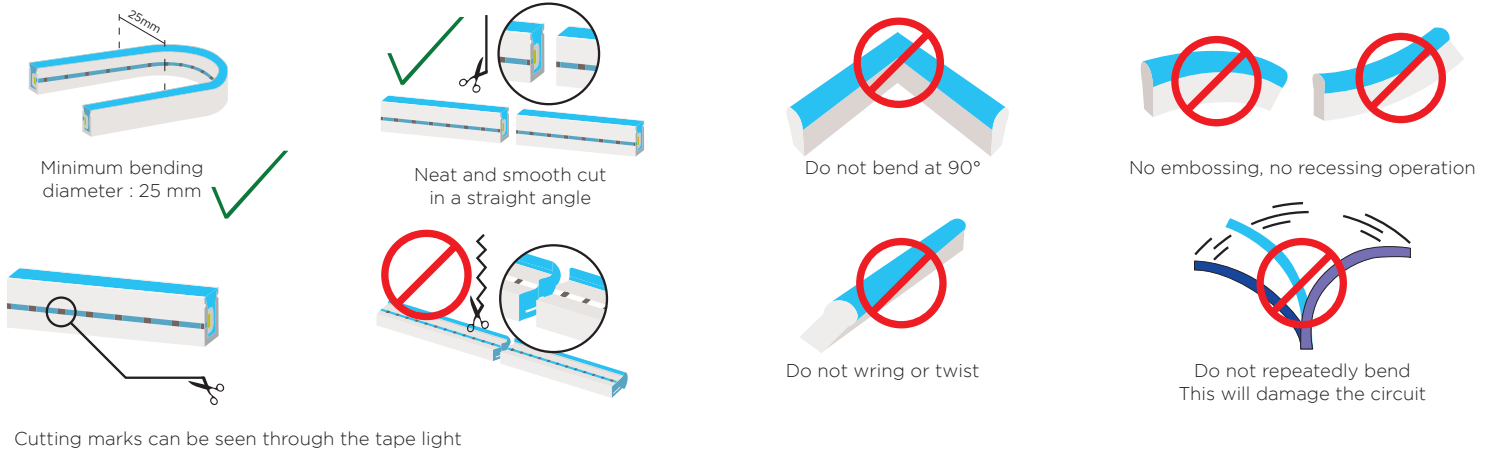
WIRING DIAGRAM



LENGTH RECOMMANDATION WITH 12V/DC AND TEFLON CABLE

- ▶ 50W LED load = 1 m max
- ▶ 36W LED load = 1,5 m max
- ▶ 24W LED load = 2 m max
- ▶ 12W LED load = 3 m max

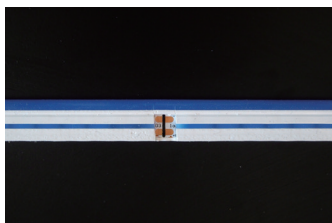
INSTALLATION CAUTION



MiNeon[®] PRO

SIGNAGE - Letters and logos

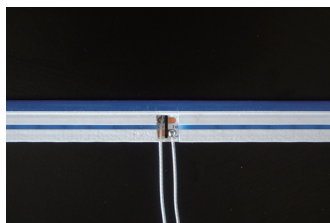
WIRING EXAMPLE WITH MINEON[®] PRO D6



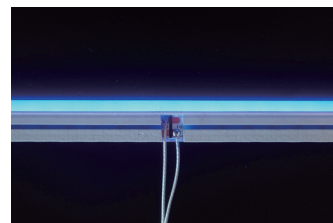
1. Cut the silicon without cutting the PCB and remove it



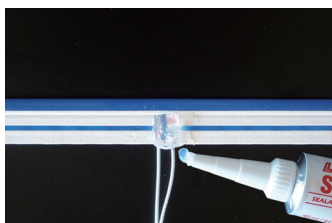
2. Clean and prepare the soldering pads



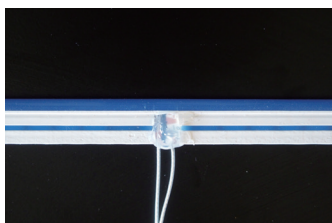
3. Solder the wire



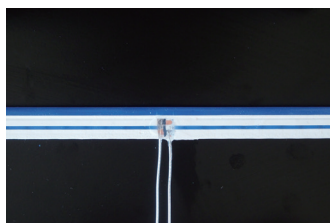
4. Test



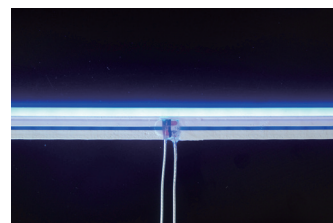
5. Put resin



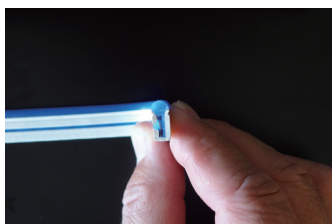
6. Let it dry



7. Your MiNeon[®] is ready to be installed and used



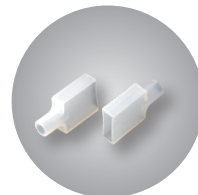
END PROTECTION WITH MINEON[®] PRO D6



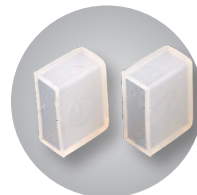
+



+



21820374



21820375

After modification, remember to protect the ends of the MiNeon[®] with silicone resin and silicone end caps.

MiNeon[®] PRO

SIGNAGE - Letters and logos

FAILURE RATE

Our LED system has a max failure rate of 0.2% per 1000 operating hours.

NORMS & CERTIFICATES

- ▶ EN 55015:2013+A1:2015
- ▶ EN 61547:2009



WARRANTY

This product requires a careful handling and manipulation. Also the cutting and connections need to be made carefully to keep the water ingression protection. Warranty does not cover any failures that are due to improper manipulation and excessive bending of the product or its installation. Please contact us for any doubt before working with the product.

INSTALLATION

- ▶ Always connect the LED product to the power supply while it is OFF. Only then you can connect the power supply to electricity and turn it ON.
- ▶ Respect the maximum lenght in a row.
- ▶ Check compatibility between LED product and driver voltage.
- ▶ Install LED on a clean work station connected to the earth. All LEDs are sensitive to static electricity (ESD).
- ▶ Limit the cable length between LED and power supply (voltage drop).

THERMAL BEHAVIOUR

The temperature limits indicated below are expressed in °C, at full load, after 3h of operation conditions, with natural convection:

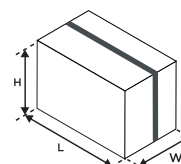
- ▶ Operation temperature Ta -40°C to +80°C
- ▶ Storage temperature Ts -40°C to +80°C
- ▶ Max. temperature Tc +80°C

The life of the product will decrease when the maximum temperature limits are exceeded.

Operating for a continuous extended time at temperatures exceeding the maximum limits, the LED system can fail and our warranty will be void.

PACKAGING

Type	SIZE - LxWxH (cm)	SIZE - LxWxH (ft)	Weight (kg)	Weight (lb)	Units (roll)
MiNeon PRO D6	33x26x27	1x0,8x0,9	9,3	20	15
MiNeon PRO F6	33x26x27	1x0,8x0,9	10	22	15



(When the min and max values are not indicated, the tolerance range for optical and electrical data is ±15 %, the tolerance range for total length is ±1 %)