

Product Manual:

BIOklar Move 140

4 - Chamber Filtering System for ponds of capacity approx. 140 000 l.



- Made out of a fiberglass laminate
- Input Ø 110 or hose connector Ø 25/32/40 mm upside.
- Output Ø 110 mm upside.
- Sedimentation tanks with drain valves Ø 60 mm under each chamber for a convenient pollution removal and easy filter draining
- Air pump PA80 attached to the set.
- Dimensions: 295 x 108 x 100 cm (height.)
- Recommended efficiency of a pump - approx. 30 000 l/h. for example Pump JSP 35000
- Maximal recommended capacity of a pond without fish - approx. 280 m³.
- Maximal recommended capacity of a pond with fish - approx. 140 m³.
- Maximal recommended capacity of a coi pond - approx. 100 m³.

DEAR CLIENT!

We would like to thank You for choosing a product from our wide range of pond filters BIOklar. This Manual contains essential informations to help You install, use & conservate Your pond's filter.

MAIN OPERATION:

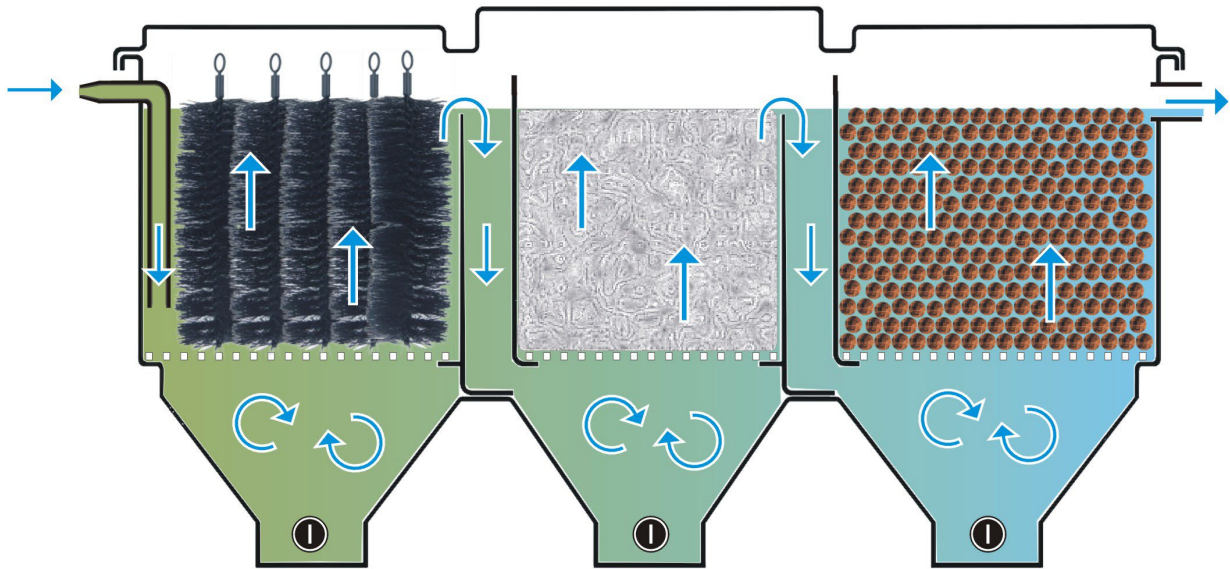
Products from the BIOklar MOVE series are really effective bio-mechanical filters. Our filters do not require a frequent cleansing thanks to the right combination of filtering materials and also due to the work of sedimentation tanks with drain valves.

Water from the pond gets to the first chamber and then to the others, always reaching the downside tank first, where the greatest pollution is collected.

Water from the tank flows upside through consecutive filtering layers in each chamber. From the last chamber, already cleaned water gets back to the pond.

When launching for the first time or when using it for a first time after a long break the full operational efficiency of the filter will be reached after 14 days.

HOW IT WORKS:

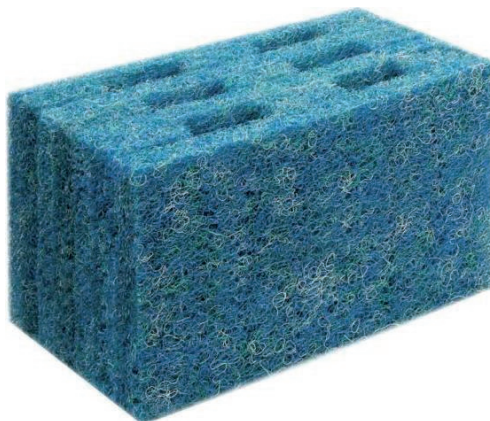


Model BIOklar Move 140 has 4 filtering chambers:

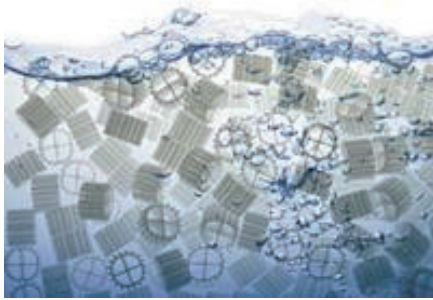
- 1st Chamber contains special brushes - the mechanical part of the filter.



- 2nd & 3rd Chamber is filled with filter wadding or Japanese mat that filter the water both in a biological and mechanical way.



- 4th Chamber contains special “Kaldnes” filtering substrat - floating “moving bed” system. It consist of Ø 11mm plastic fittings, with a big bio-active surface, that are naturally floating on water. In oxygen saturated water on the surface of the fittings arise a bio-active membrane that works much more efficient than on the static filtering media. That Chamber is constantly aerated with the help of a set aerator connected to the air pump that is in-the-box with the set.



MONTAGE & LAUNCH

Choose a flat and stabile place that in the future can be easily reached for the purpose of the conservation. As to maximize its potential, the pond filter should be placed in the full/mid shadow during the day so the floating water does not get unnecessarily heat by the sun rays. Ensure Yourself that each drain valve is easily reachable to open & close operations during the filter cleansing. Put the attached air pump near the filter above the water level as to secure it from the sun rays and humidity. Connect the pump with the aerator with the help of a hose on which there should be a check valve mounted that prevents water from getting back to the air pump.

If You have a version of a filter without mounted drain valves.

Use the drain valve set and attached glue.

Degrease with an acetone or an extraction solvent and clean the glued part and then put a flat layer of glue on the surface. Then promptly put a valve in the output caring about appropriate positioning. The adhesive sets quite quickly and therefore any further changes of the valve position are impossible.

If You have a pump version.

There is a special hose connector attached to the set which should be putted in the filter inlet hole from below and then tighten the nut from the inside setting all together. The gasket should be placed outside.



Before launching the filter, please check once again following points:

All hose and pipes connections are properly routed and set. Input and output filter, pumps and other elements connections fit tight.

Drain valves are closed.

Filtering layers in chambers are properly set.

Fill the filter with water.

Check the work of the aeration system in chamber with a moving bed “Kaldnes”.

Now you can run the filtration by following actions:

Firstly, switch the pump on and check if the water runs without disturbance through the filter and other elements of the installation.

Check carefully if there are no leak-outs. Due to the production tolerance there may some dripping on the connectors between the hose and the joints occur. In that situation we advise a teflon tape PFTE usage.

EXPLOITATION:

After launch, the pond filter BIOklar should work ceaselessly. Every long-term stop of water flow causes biological life disorder in the filter and requires cleaning and rinsing of the filter layers before next filter launch. Remember that after re-launching the filter needs 14 days to get back to its maximum efficiency and effectiveness. Before the winter season drain water from the filter and clean from mud and organic pollution. Thanks to that, the spring time preparations will go much easier and without unpleasant surprises.

Once in a week open the drain valves and let the pollution flow from the sedimentation tanks. Every two-three week switch off the circulation pump, and open the drain valve while moving the brushes and filtering mat or Japanese mat at the same time. If necessary, repeat.

Finally, close the drain valves and switch on the pump again.

For full filter work benefit we recommend:

- UVC Lamp that eliminates green discolouration caused by algae multiplying in water.

POSSIBLE ISSUES:

You can prevent some issues by regular BIOklar filter examination.

If, despite of regular cleaning, filtering performance is not satisfying, it may be caused by one of following reasons:

- Efficiency of mounted pond filter is not appropriate for the pond capacity and / or the fish quantity
 - in that case we advise a bigger filter usage.
- Using a pump that is less efficient than the recommended one
 - due to the settlement of a biological material on hose, joints and other elements the water flow gets diminished.
- Using a pump that is bigger than recommended
 - that can cause water rise in chambers and leak-outs.

Warranty:

The product has a two-year warranty for hidden defects of the material. The warranty is valid only with the proof of purchase and filled warranty card.

The warranty does not cover damage resulting from improper use.

Seller Seal

Date and place of sale

Happet Sp. z o.o.
Kotowo 42
60-009 Poznań
www.happet.eu