

Watertight B10 Floor Box

Configuration example








Flush mounting box
+ False Floor Kit (optional)
Empty flush mounting box
STAINLESS STEEL False floor Kit for BFB160




Brass lids
+ Mechanism holder
with a empty mechanism 45x45 mm
with a socket 2P+T 16A 250V NF




Stainless steel lids
+ Mechanism holder
with a empty mechanism 45x45 mm
with a socket 2P+T 16A 250V NF

www.bubox.eu



Mechanisms B45

B45* is the perfect combination with B10

Face plates for KEYSTONE connectors	B451P1	B452P1	B452P2
KEYSTONE connectors RJ11, RJ45 & VDM	B450C3	B450C5U	B450C5F
	B450C5S	B450C6U	B450C6F
	B450C6S		
Loudspeakers	B451HP	B452A4C	B452TVR
4-pole speakon			
9,52 M/F TV/RD			
HDMI			
1 USB power	B451USB	B452USB	B451S22
2 USB power			
Blanking plate			
Blanking plate			

* In combination with BFC100/* and BFC110/*.
Other mechanism on request.




- Photos not contractual

Tool for opening the lid	Standard	Safety-Lock	Safety-Lock
BFP001	BFP002	BFP003	

Protection Plug Kit

Allows the safety and protection of a connected plug (when cleaning the floor)

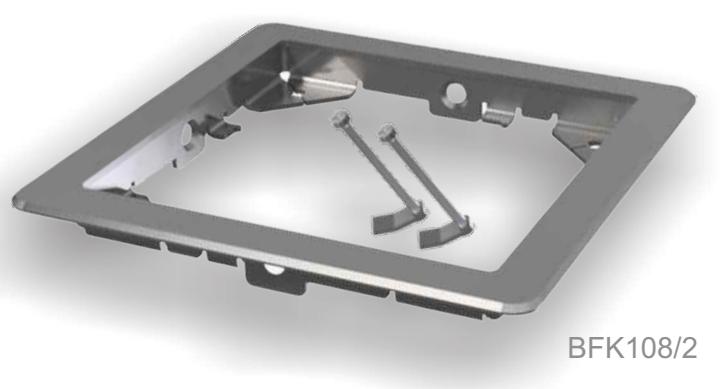


BKF107/90 Aluminium
BKF107/91 Champagne
BKF107/92 Graphite

False floor Kit

A solid frame (and screws) made of stainless steel 316 allows the integration of B10 in technical floor and / or false floor



Think BUBOX B10 for outdoor

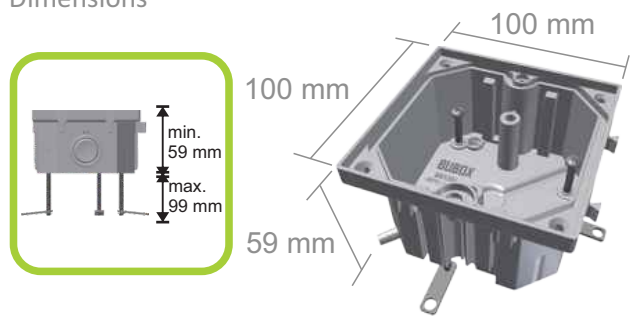


Certifications
Bubox products complies with the International Standards
EN60670-23 : 2006 and IEC60670 : 2008 + IEC60529 and IEC62262.

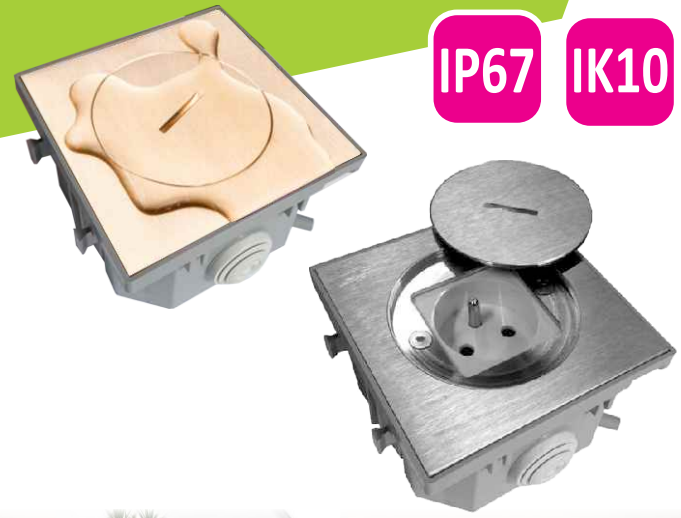
CEBEC NF KEMA GOST RoHS COMPLIANT

Patented product, Trademark, plans and models

Dimensions



BUBOX®
innovative floorbox



Watertight B10 FLOORBOX

For electrical sockets, voice and data connections or multimedia. With or without a safety lock.
For indoor or outdoor use.

MADE IN BELGIUM

