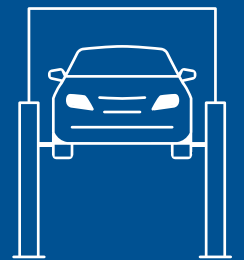


2-POST LIFTS
Electromechanical

From History to the Future



**LEGEND
SERIES**

 **Ravaglioli**



Up-to-date design:

a modern outline that brings modernity and usability to the workshop

Innovative DNA:

long-standing high-quality components and tested for 20000 cycles

Future proof:

lifts designed for the TEq-Link workshop connectivity system

Emerging from the best-selling 2-post lifts, the Legend Series consolidates the **engineering knowledge** of Ravaglioli and shapes it into an **innovative package**. **Looking towards the future while always honouring the past**, Ravaglioli has set an important goal for itself - let the performance meet the design.

2-POST LIFTS

Electromechanical



Electronic synchronization.

Truly asymmetric columns designed to optimize the drive through and footprint.



3-stage arms with quick fit and telescopic rubber pads.

Quick nut replacing. New motor plate that allows to remove the screw from the front side of the column with the column standing.

Internal carriages running on lubricated sliding guides, protected from the external environment, that ensures a longer life to the sliding elements.

Equipped with an acoustic anti toe trap system. Free from mechanical foot guards.

Premium quality of components



Aluminum pulley with cooling function.



Long lasting bearings.



50% longer, bronze load nut.



Motors with reinforced and cooling casing.



Solid automatic arm locking.

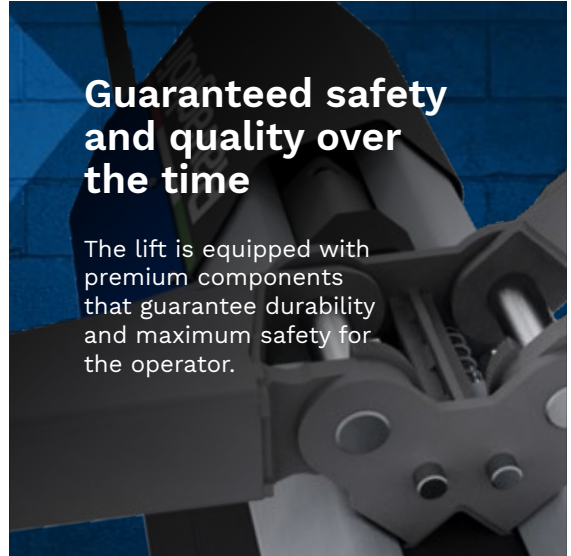
Minimum routine maintenance

The operating parts require little time for easy replacement or maintenance reducing the risk of error on safety elements.



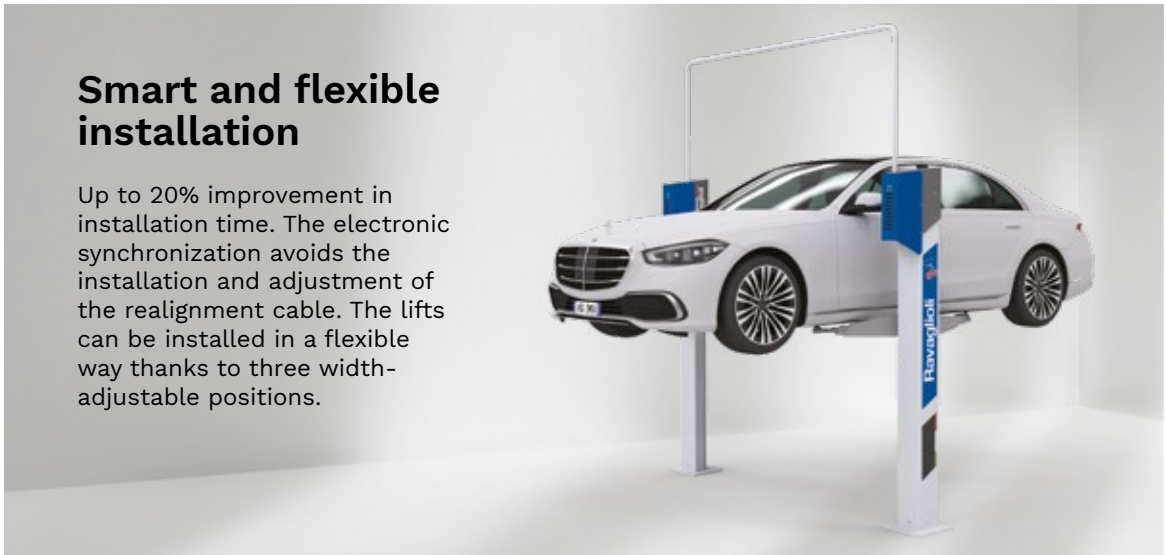
Guaranteed safety and quality over the time

The lift is equipped with premium components that guarantee durability and maximum safety for the operator.



Smart and flexible installation

Up to 20% improvement in installation time. The electronic synchronization avoids the installation and adjustment of the realignment cable. The lifts can be installed in a flexible way thanks to three width-adjustable positions.



Quick and easy operations

The working bay is free of obstacles and the operations can be performed safely and comfortably.



TEq-Link
connected workshop

A step into the future

Selected models with integrated TEq-Link module which enables to monitor work cycles, trigger alerts for scheduled maintenance and more.



2-POST LIFTS

Electromechanical

KPX32

The geometry of the arms has been designed to lift from micro-cars to long wheel base sedan.



3.2

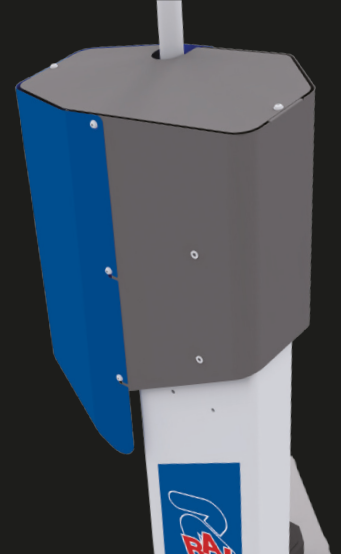


KPX35

The geometry of the arms has been designed to lift from micro-cars to long wheel base medium vans.



3.5



Controlled up/down by pushing button positioned at an ergonomic height.



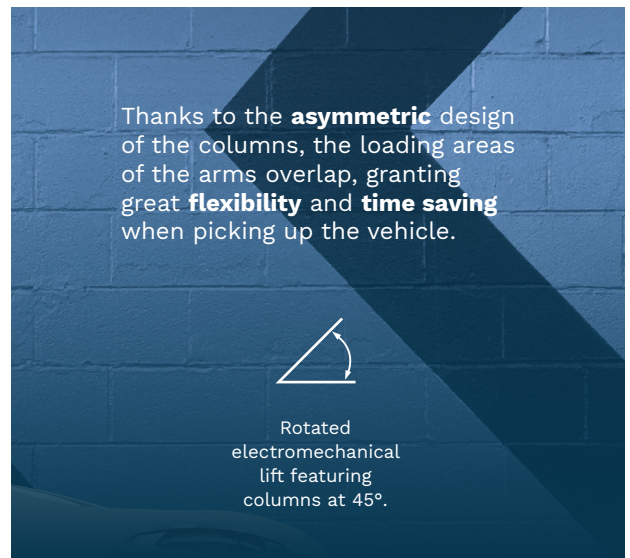
Easy door opening
The vehicle can be placed backward without any worries about damaging the vehicle itself.



Thanks to the **asymmetric** design of the columns, the loading areas of the arms overlap, granting great **flexibility** and **time saving** when picking up the vehicle.



Rotated electromechanical lift featuring columns at 45°.



More room for moving around

The lift is designed to have the same total width as the standard lift but with a greater drive through.

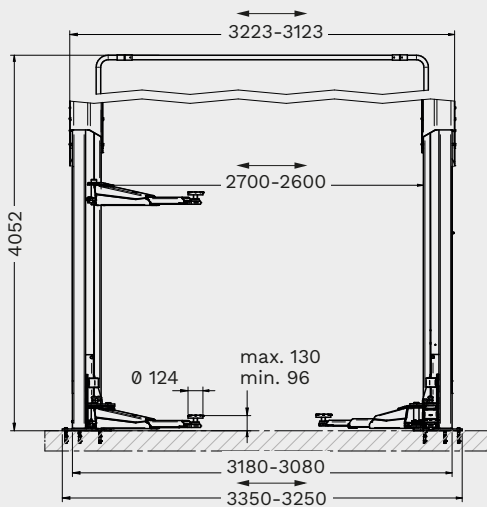
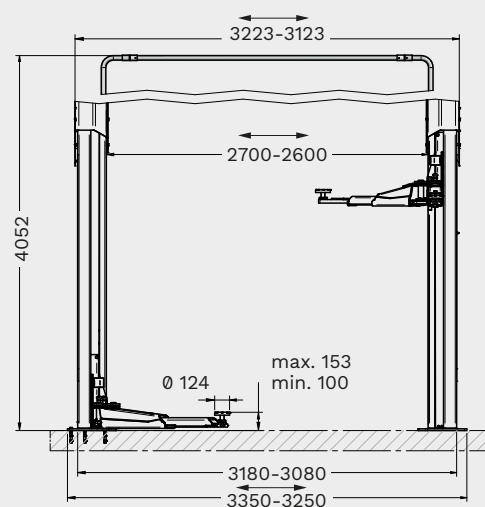


Quick car positioning

The operator has at his disposal a wide loading area, without the necessity of pushing and pulling the vehicle to find the right lifting position.



Technical Data

KPX32

KPX35


	KPX32	KPX35
Capacity	3200 kg	3500 kg
Max. lifting height	2000 mm	2000 mm
Lifting time	42 s	42 s
Min. pad height	96 mm	100 mm
Max. pad height	130 mm	150 mm
Column height	3223 mm	3223 mm
Drive-through width	2372-2472 mm	2372-2472 mm
Min. ceiling height	4150 mm	4150 mm
Arm layout	asymmetrical	
Min. front arm length	555 mm	564 mm
Max. front arm length	1100 mm	1160 mm
Min. rear arm length	805 mm	922 mm
Max. rear arm length	1200 mm	1460 mm
Driving power	2x2.6 kW	2x3.5 kW
Width	3250-3350 mm	3250-3350 mm
Height	4052 mm	4052 mm

Item no.	Control	Energy kit	TEq-Link
RAV.KPX32.198570	switch		
RAV.KPX32.198624	push buttons	✓	✓
RAV.KPX35.199010	push buttons		✓
RAV.KPX35.199157	push buttons	✓	✓



RAV Italy

Ravaglioli S.p.A.

Via Primo Maggio 3
Pontecchio Marconi
40037 Sasso Marconi BO

☎ +39.051.6781511
☎ +39.051.846349
✉ rav@ravaglioli.com

RAV France

RAV France SARL

4, Rue Longue Raie
ZAC de la Tremblaie
91220 Le Plessis Pâté

☎ +331.60.86.88.16
☎ +33.1.60.86.82.04
✉ rav@ravfrance.fr

RAV Germany

BlitzRotary GmbH

Hüfingler Straße 55
78199 Bräunlingen
Germany

☎ +49.771.9233.0
☎ +49.771.9233.99
✉ ravid@ravaglioli.com

RAV UK

Vehicle Service Group UK Ltd

3 Fourth Avenue,
Bluebridge Industrial Estate
Halstead, Essex, CO9 2SY, UK

☎ +44.1787.477711
☎ +44.1787.477720
✉ rav@ravaglioli.com

DRN42U(01)

Technical data and composition presented in this catalogue may vary.
Pictures reproduced are only indicative.

Member of VSG - Vehicle Service Group
a **DOVER** company

