

Product Lines

Wheel Aligner-9000 Mobile



**Multibay Compatibility
& Synchronized
Camera/Lift Movement**

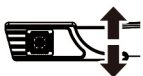
The 9000 Mobile is a market-proven wheel aligner introduced by TREADPLUS in 2016. Designed to offer reliability and ease of use, this advanced aligner runs on the latest Windows 11 system and features a 32" display powered by a Dell computer. With a mobile cabinet that is both portable and easy to move around, the 9000 Mobile is compatible with multiple bays, making it a versatile choice for any automotive service center.



BDM Target



Multi-Functional Assitant LED



Auto Tracking



WINDOWS 11



Multi Runout Selection



Mobile Cabinet Design



9000 Mobile

www.treadplus.com

Features

• Latest Windows System

Ensures up-to-date technology and security features. Smooth and efficient performance for all alignment tasks.

• 32" Display with Dell Computer

High-resolution screen for clear and detailed visuals. Reliable and powerful hardware to support intensive applications.

• Mobile Cabinet Design

Portable and easy to move, allowing for flexibility in use. Ideal for multi-bay compatibility, enhancing service efficiency.

• 2 Camera System

Simple and effective design without the need for an interface board. Provides accurate and reliable alignment results.

Choice of 3 Alignment Procedures



Quick
Toe-N-Go



Standard
Fast with Full
Alignment Procedure



Advanced
Enhanced Precision

Multi Runout Selection



Standard



Forward Only



Split



Backward Only



Random



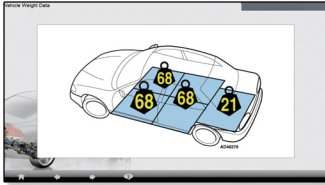
Key Features



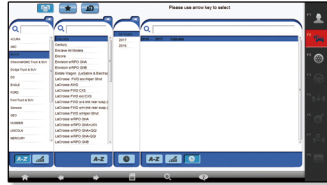
Quick sweep



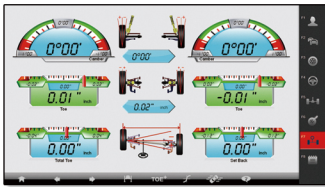
Auto tracking



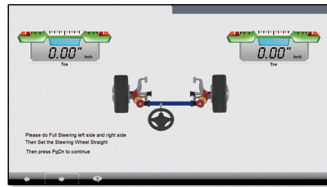
Weight illustration program



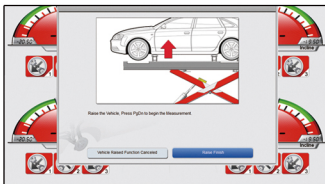
Built in counter for each different functions



Real time synchronized measurement data



Freeze toe value while reaching hard to adjust point



Freeze camber and caster measurement data while vehicle is raised



Initiate control and then view live data by scanning the QR code from software info on the screen

Technical Data

Parameter	Range
Total Toe	50°
Individual Toe	25°
Camber	15°
Set Back	9°
Thrust Angle	9°
Caster	22°
KPI/SAI	22°
Wheelbase	1.8-4.5M
Track Width	1.1-1.9M

Service Bay Layout Drawing

