

Product Lines Wheel Aligner-9000 AIO



The Right Solution for Todays Vehicle Alignment Needs

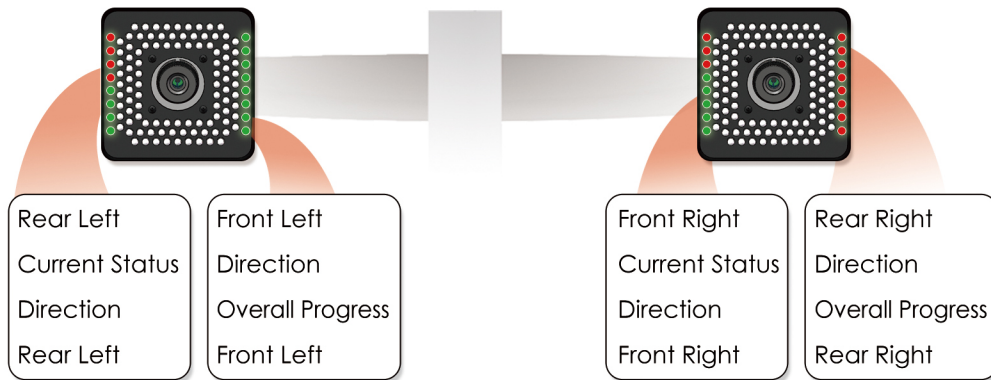
The 9000 AIO a refreshed model from TREADPLUS featuring the newly developed V35 software. Designed with a space-saving rack that houses the computer inside, this advanced aligner operates on the latest Windows 11 system. Its compact design makes it an ideal fit for small shops, while the simple 2 camera setup and standard 25-inch wheel clamp ensure ease of use and reliable performance.



9000 AIO

www.treadplus.com

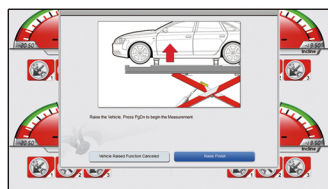
Multi-functional "Assistant LED's"



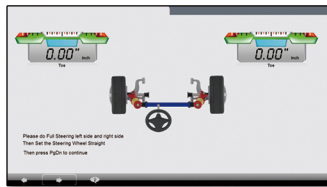
Key Features



Real time synchronized measurement data



Freeze camber and caster measurement data while vehicle is raised



Freeze toe value while reaching hard to adjust point



Initiate control and then view live data by scanning the QR code from software info on the screen

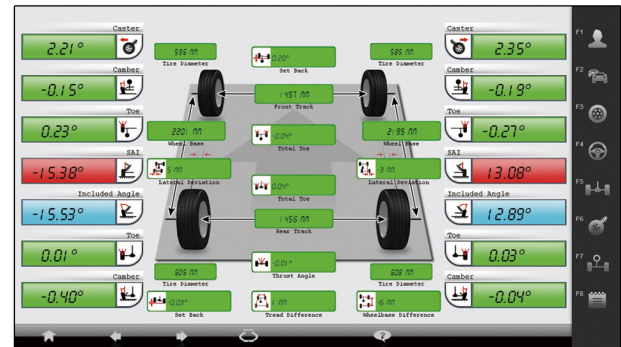
Live Data Screen

Basic Measurement

- Toe
- Camber
- Caster
- Included Angle
- SAI (King-Pin)
- Setback (Front and Rear)
- Thrust Angle

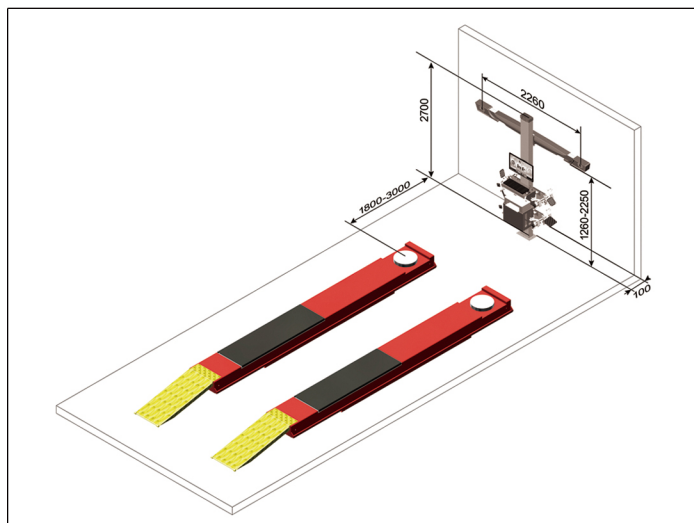
Advanced Measurement

- Track Width
- Lateral Deviation
- Tread Difference
- Wheelbase
- Wheelbase Difference
- Scrub Radius*
- X Diagonal*
- Tire Diameter*
- Elevated Camber and Caster



*Some features may not be available in all countries or all areas.

Service Bay Layout Drawing



Technical Data

Parameter	Range
Total Toe	50°
Individual Toe	25°
Camber	15°
Set Back	9°
Thrust Angle	9°
Caster	22°
KPI/SAI	22°
Wheelbase	1.8-4.5M
Track Width	1.1-1.9M