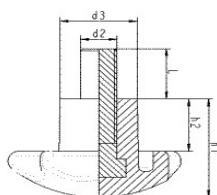
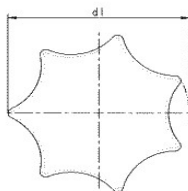


Grupa HST

Pokręta gwiazdowe

ze stalowym trzpieniem gwintowanym



Materiał: PA-6, stal

Kolory standardowe: czarny

Numer katalog.	Średnica gabarytowa pokręta		Gwint d2 x L [mm]	d3 [mm]	h1 [mm]	h2 [mm]
	d1 [mm]					
AR2516M410S	25		M4 x 10	13,0	16,0	8,0
AR2516M414S	25		M4 x 14	13,0	16,0	8,0
AR2516M510S	25		M5 x 10	13,0	16,0	8,0
AR2516M515S	25		M5 x 15	13,0	16,0	8,0
AR2516M520S	25		M5 x 20	13,0	16,0	8,0
AR2516M540S	25		M5 x 40	13,0	16,0	8,0
AR2516M550S	25		M5 x 50	13,0	16,0	8,0
AR2516M610S	25		M6 x 10	13,0	16,0	8,0
AR2516M615S	25		M6 x 15	13,0	16,0	8,0
AR2516M620S	25		M6 x 20	13,0	16,0	8,0
AR2516M625S	25		M6 x 25	13,0	16,0	8,0
AR2516M630S	25		M6 x 30	13,0	16,0	8,0
AR2516M645S	25		M6 x 45	13,0	16,0	8,0
AR2516M650S	25		M6 x 50	13,0	16,0	8,0
AR2516M660S	25		M6 x 60	13,0	16,0	8,0
AR3020M510S	30		M5 x 10	15,0	20,0	10,0
AR3020M515S	30		M5 x 15	15,0	20,0	10,0
AR3020M520S	30		M5 x 20	15,0	20,0	10,0
AT3020M525S	30		M5 x 25	15,0	20,0	10,0
AR3020M530S	30		M5 x 30	15,0	20,0	10,0
AR3020M545S	30		M5 x 45	15,0	20,0	10,0
AR3020M610S	30		M6 x 10	15,0	20,0	10,0
AR3020M615S	30		M6 x 15	15,0	20,0	10,0
AR3020M620S	30		M6 x 20	15,0	20,0	10,0
AR3020M625S	30		M6 x 25	15,0	20,0	10,0
AR3020M630S	30		M6 x 30	15,0	20,0	10,0
AR3020M635S	30		M6 x 35	15,0	20,0	10,0

Średnica

Numer katalog.	gabarytowa		d3 [mm]	h1 [mm]	h2 [mm]
	pokręta d1 [mm]	Gwint d2 x L [mm]			
AR3020M640S	30	M6 x 40	15,0	20,0	10,0
AR3020M645S	30	M6 x 45	15,0	20,0	10,0
AR3020M650S	30	M6 x 50	15,0	20,0	10,0
AR3020M660S	30	M6 x 60	15,0	20,0	10,0
AR3020M665S	30	M6 x 65	15,0	20,0	10,0
AR3020M670S	30	M6 x 70	15,0	20,0	10,0
AR3020M810S	30	M8 x 10	15,0	20,0	10,0
AR3020M815S	30	M8 x 15	15,0	20,0	10,0
AR3020M820S	30	M8 x 20	15,0	20,0	10,0
AR3020M825S	30	M8 x 25	15,0	20,0	10,0
AR3020M830S	30	M8 x 30	15,0	20,0	10,0
AR3020M835S	30	M8 x 35	15,0	20,0	10,0
AR3020M840S	30	M8 x 40	15,0	20,0	10,0
AR3020M850S	30	M8 x 50	15,0	20,0	10,0
AR3020M860S	30	M8 x 60	15,0	20,0	10,0
AR3020M880S	30	M8 x 80	15,0	20,0	10,0
AR4023M510S	40	M5 x 10	16,0	23,0	11,0
AR4023M520S	40	M5 x 20	16,0	23,0	11,0
AR4023M610S	40	M6 x 10	16,0	23,0	11,0
AR4023M615S	40	M6 x 15	16,0	23,0	11,0
AR4023M620S	40	M6 x 20	16,0	23,0	11,0
AR4023M625S	40	M6 x 25	16,0	23,0	11,0
AR4023M630S	40	M6 x 30	16,0	23,0	11,0
AR4023M635S	40	M6 x 35	16,0	23,0	11,0
AR4023M640S	40	M6 x 40	16,0	23,0	11,0
AR4023M645S	40	M6 x 45	16,0	23,0	11,0
AR4023M650S	40	M6 x 50	16,0	23,0	11,0
AR4023M660S	40	M6 x 60	16,0	23,0	11,0
AR4023M670S	40	M6 x 70	16,0	23,0	11,0
AR4023M810S	40	M8 x 10	16,0	23,0	11,0
AR4023M815S	40	M8 x 15	16,0	23,0	11,0
AR4023M820S	40	M8 x 20	16,0	23,0	11,0
AR4023M825S	40	M8 x 25	16,0	23,0	11,0
AR4023M830S	40	M8 x 30	16,0	23,0	11,0
AR4023M835S	40	M8 x 35	16,0	23,0	11,0
AR4023M840S	40	M8 x 40	16,0	23,0	11,0
AR4023M845S	40	M8 x 45	16,0	23,0	11,0
AR4023M850S	40	M8 x 50	16,0	23,0	11,0
AR4023M855S	40	M8 x 55	16,0	23,0	11,0
AR4023M860S	40	M8 x 60	16,0	23,0	11,0
AR4023M870S	40	M8 x 70	16,0	23,0	11,0
AR4023M880S	40	M8 x 80	16,0	23,0	11,0
AR4023M895S	40	M8 x 95	16,0	23,0	11,0
AR4023M8110S	40	M8 x 110	16,0	23,0	11,0
AR5032M615S	50	M6 x 15	21,0	32,0	19,0
AR5032M620S	50	M6 x 20	21,0	32,0	19,0
AR5032M630S	50	M6 x 30	21,0	32,0	19,0
AR5032M635S	50	M6 x 35	21,0	32,0	19,0

Średnica

Numer katalog.	gabarytowa		d3 [mm]	h1 [mm]	h2 [mm]
	pokręta d1 [mm]	Gwint d2 x L [mm]			
AR5032M640S	50	M6 x 40	21,0	32,0	19,0
AR5032M650S	50	M6 x 50	21,0	32,0	19,0
AR5032M660S	50	M6 x 60	21,0	32,0	19,0
AR5032M810S	50	M8 x 10	21,0	32,0	19,0
AR5032M815S	50	M8 x 15	21,0	32,0	19,0
AR5032M820S	50	M8 x 20	21,0	32,0	19,0
AR5032M825S	50	M8 x 25	21,0	32,0	19,0
AR5032M830S	50	M8 x 30	21,0	32,0	19,0
AR5032M835S	50	M8 x 35	21,0	32,0	19,0
AR5032M840S	50	M8 x 40	21,0	32,0	19,0
AR5032M845S	50	M8 x 45	21,0	32,0	19,0
AR5032M850S	50	M8 x 50	21,0	32,0	19,0
AR5032M860S	50	M8 x 60	21,0	32,0	19,0
AR5032M865S	50	M8 x 65	21,0	32,0	19,0
AR5032M870S	50	M8 x 70	21,0	32,0	19,0
AR5032M875S	50	M8 x 75	21,0	32,0	19,0
AR5032M890S	50	M8 x 90	21,0	32,0	19,0
AR5032M8100S	50	M8 x 100	21,0	32,0	19,0
AR5032M8120S	50	M8 x 120	21,0	32,0	19,0
AR5032M1015S	50	M10 x 15	21,0	32,0	19,0
AR5032M1020S	50	M10 x 20	21,0	32,0	19,0
AR5032M1025S	50	M10 x 25	21,0	32,0	19,0
AR5032M1030S	50	M10 x 30	21,0	32,0	19,0
AR5032M1035S	50	M10 x 35	21,0	32,0	19,0
AR5032M1040S	50	M10 x 40	21,0	32,0	19,0
AR5032M1045S	50	M10 x 45	21,0	32,0	19,0
AR5032M1050S	50	M10 x 50	21,0	32,0	19,0
AR5032M1060S	50	M10 x 60	21,0	32,0	19,0
AR5032M1065S	50	M10 x 65	21,0	32,0	19,0
AR5032M1070S	50	M10 x 70	21,0	32,0	19,0
AR5032M1080S	50	M10 x 80	21,0	32,0	19,0
AR6040M815S	60	M8 x 15	24,0	40,0	20,0
AR6040M820S	60	M8 x 20	24,0	40,0	20,0
AR6040M825S	60	M8 x 25	24,0	40,0	20,0
AR6040M830S	60	M8 x 30	24,0	40,0	20,0
AR6040M845S	60	M8 x 45	24,0	40,0	20,0
AR6040M865S	60	M8 x 65	24,0	40,0	20,0
AR6040M8120S	60	M8 x 120	24,0	40,0	20,0
AR6040M1016S	60	M10 x 16	24,0	40,0	20,0
AR6040M1020S	60	M10 x 20	24,0	40,0	20,0
AR6040M1025S	60	M10 x 25	24,0	40,0	20,0
AR6040M1030S	60	M10 x 30	24,0	40,0	20,0
AR6040M1035S	60	M10 x 35	24,0	40,0	20,0
AR6040M1040S	60	M10 x 40	24,0	40,0	20,0
AR6040M1045S	60	M10 x 45	24,0	40,0	20,0
AR6040M1050S	60	M10 x 50	24,0	40,0	20,0
AR6040M1060S	60	M10 x 60	24,0	40,0	20,0
AR6040M1070S	60	M10 x 70	24,0	40,0	20,0

Średnica

Numer katalog.	gabarytowa		d3 [mm]	h1 [mm]	h2 [mm]
	pokręta d1 [mm]	Gwint d2 x L [mm]			
AR6040M1215S	60	M12 x 15	24,0	40,0	20,0
AR6040M1220S	60	M12 x 20	24,0	40,0	20,0
AR6040M1225S	60	M12 x 25	24,0	40,0	20,0
AR6040M1230S	60	M12 x 30	24,0	40,0	20,0
AR6040M1235S	60	M12 x 35	24,0	40,0	20,0
AR6040M1240S	60	M12 x 40	24,0	40,0	20,0
AR6040M1245S	60	M12 x 45	24,0	40,0	20,0
AR6040M1250S	60	M12 x 50	24,0	40,0	20,0
AR6040M1260S	60	M12 x 60	24,0	40,0	20,0
AR8049M815S	80	M8 x 15	34,0	49,0	26,0
AR8049M820S	80	M8 x 20	34,0	49,0	26,0
AR8049M825S	80	M8 x 25	34,0	49,0	26,0
AR8049M1030S	80	M10 x 30	34,0	49,0	26,0
AR8049M1050S	80	M10 x 50	34,0	49,0	26,0
AR8049M1240S	80	M12 x 40	34,0	49,0	26,0
AR8049M1250S	80	M12 x 50	34,0	49,0	26,0
AR8049M1260S	80	M12 x 60	34,0	49,0	26,0
AR8049M1290S	80	M12 x 90	34,0	49,0	26,0
AR8049M1615S	80	M16 x 15	34,0	49,0	26,0
AR8049M1640S	80	M16 x 40	34,0	49,0	26,0
AR8049M1650S	80	M16 x 50	34,0	49,0	26,0