



SELF SERVICE CAR WASH ACCESSORIES

CATALOGUE 2022/2023



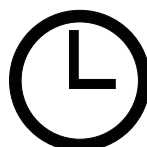
Address

ul. Szkolna 104
Suchy Las 62-002
Poland



Contact

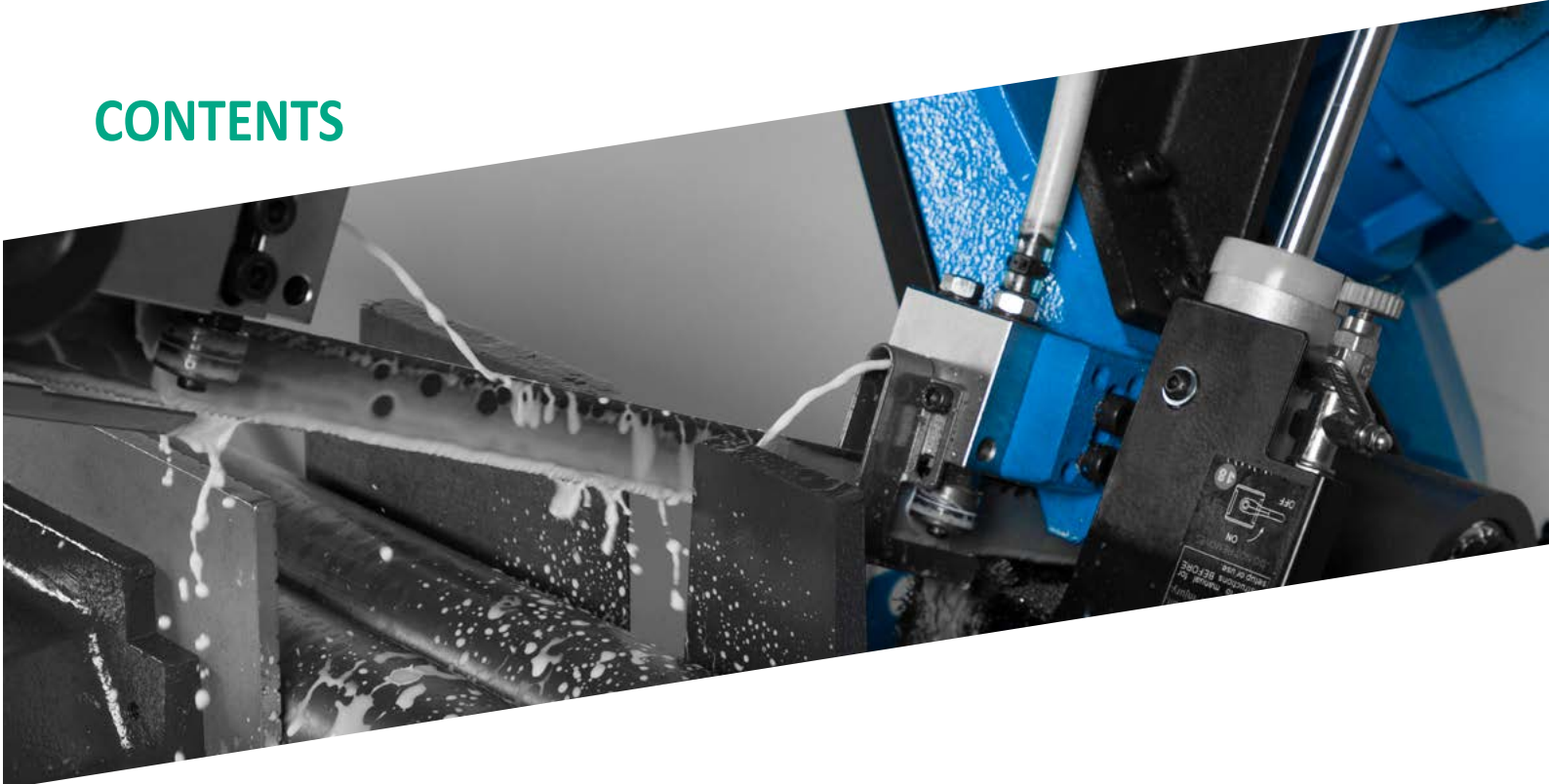
Phone: +48 616 521 895
Email: atmos@atmos.pl



Opening times

Monday	8:15- 16:15
Tuesday	8:15- 17:15
Wednesday	8:15- 16:15
Thursday	8:15- 16:15
Friday	8:15- 15:15
Saturday	closed
Sunday	closed

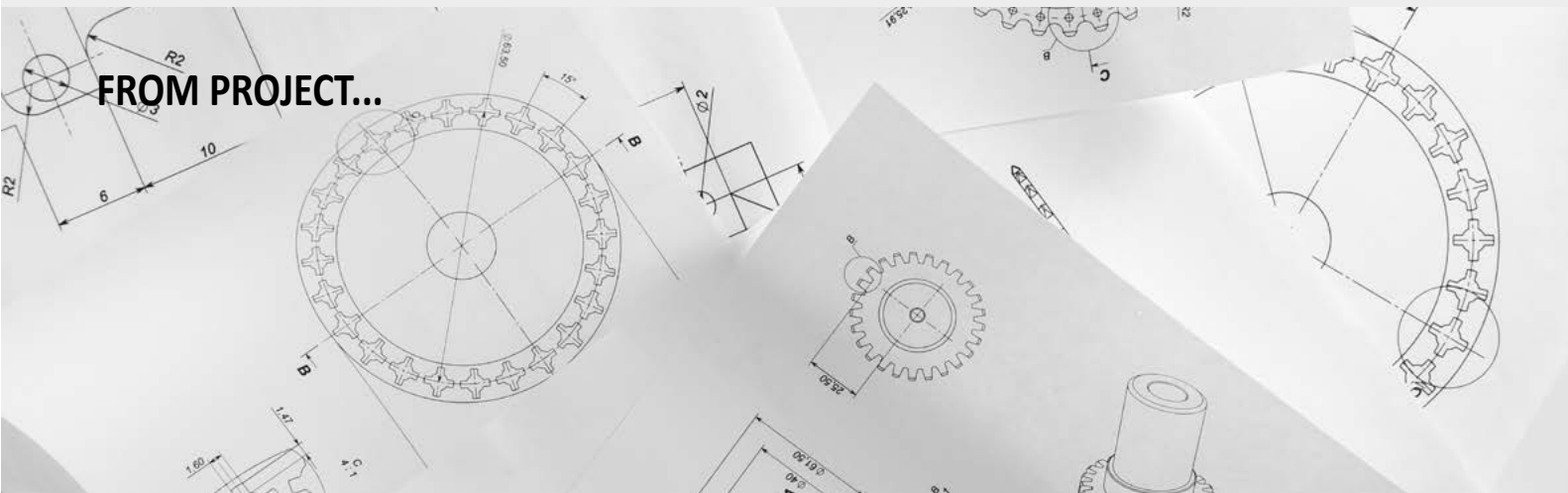
CONTENTS



02	CONTACT US
04	ABOUT US
06	BOOMS
07	Z CEILING BOOM
08	STANDARD CEILING BOOM
09	DOUBLE CEILING BOOM
10	BOOMS WITH EXTENSION
12	BOOM ASSEMBLY ACCESSORIES
14	BOOM SPARE PARTS
16	BRUSH HOLDERS
18	LANCE HOLDERS



ABOUT US



Since 1994 we provide products for Polish market and successfully create brand known for high quality and reliability. Already in 2000 we established our own high pressure machines line, which earned trust among our Customers. Simultaneously we developed partnership with leading high pressure accessories manufacturers, which gave us access to latest technologies in the industry.

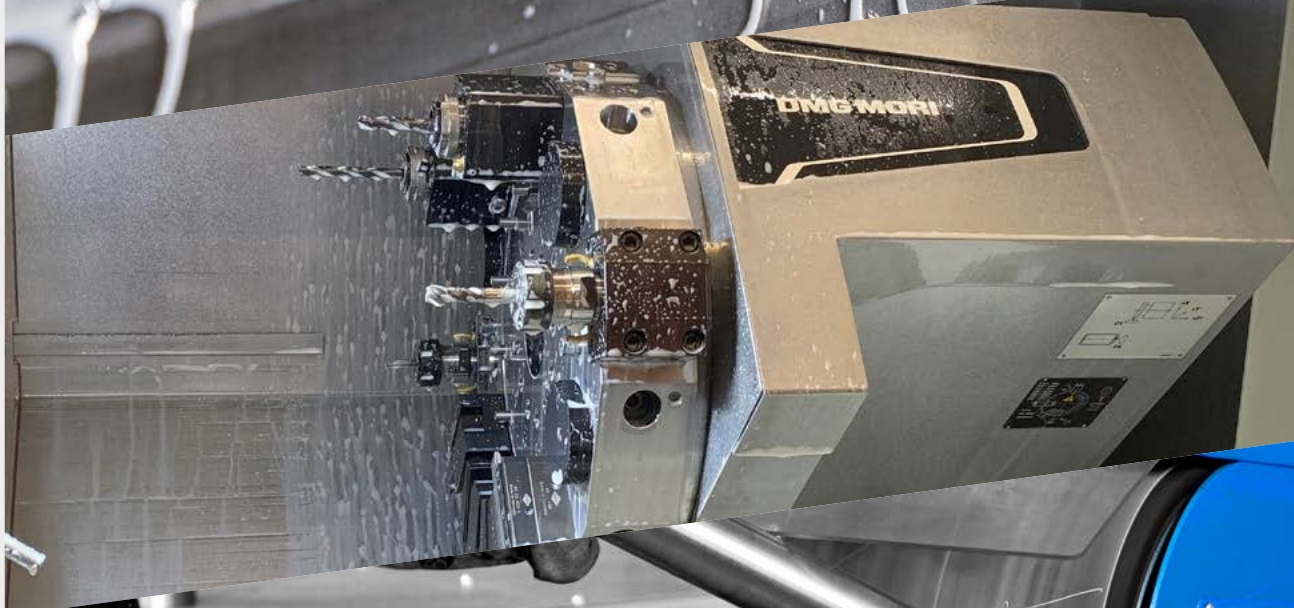
In the following years, with use of CAD engineering programmes we implemented engineering design, enabling us to create disruptive products. Application of CAM programmes in parallel with CAD made our production more flexible.

In our team we have Machine Building and Materials Engineer, whereby our constructions and machines are made based on latest engineering knowledge.

Our ownership of DMG Mori turning and milling machine, gives us possibility of precise elements turning. We also handle stainless steel welding with TIG and MIG system as well as steel profiles cutting, polishing and processing, which enables us to create all kinds of frames and stainless steel profiles construction that can be used for high pressure aggregate building.

Our speciality is acid-resistant and stainless metal processing. We stock our Customers in self service car wash accessories such as ceiling booms, boom extensions, lance holders and brush holders, which are made by us.







High quality, long lifespan 90 degrees swivel made of stainless steel. Both sealed ball bearings are stainless steel and guarantee smooth and hassle-free 360° rotation.



There's possibility to connect water to boom from the top as well as from the side. Blanking plugs are included with the boom.



From the hose's side we applied stainless steel swivel. Inside the boom we placed hose with double steel braid, which is resistant to weather conditions.



Stainless steel spring protects the hose from excessive bending.



Made of high quality stainless steel, high gloss polished to obtain extremely smooth and dirt resistant surface.



Perfect solution for self service stations equipped with several booms.
The bend enables collision-free passage. 360° rotation.

PRODUCT SPECIFICATION

Burst pressure	Max. temperature	Side inlet	Top inlet	Outlet
275 bar	90°C	1/4" F	1/4" F	1/4" M

Catalogue no.	Name	Length [mm]	Weight [kg]**
8.01.01.001	Z Ceiling Boom 1550	1550*	8,6
8.01.01.002	Z Ceiling Boom 1850	1850*	9,2

* add about 200 mm for hose overhang

** allowable weight deviations +/- 0,2 kg

STANDARD CEILING BOOM



Classic boom has a variety of uses. Assembly possible at walls or ceiling. 360° rotation. There's possibility of restricting rotation to 180°, when boom is mounted on the wall.

PRODUCT SPECIFICATIONS

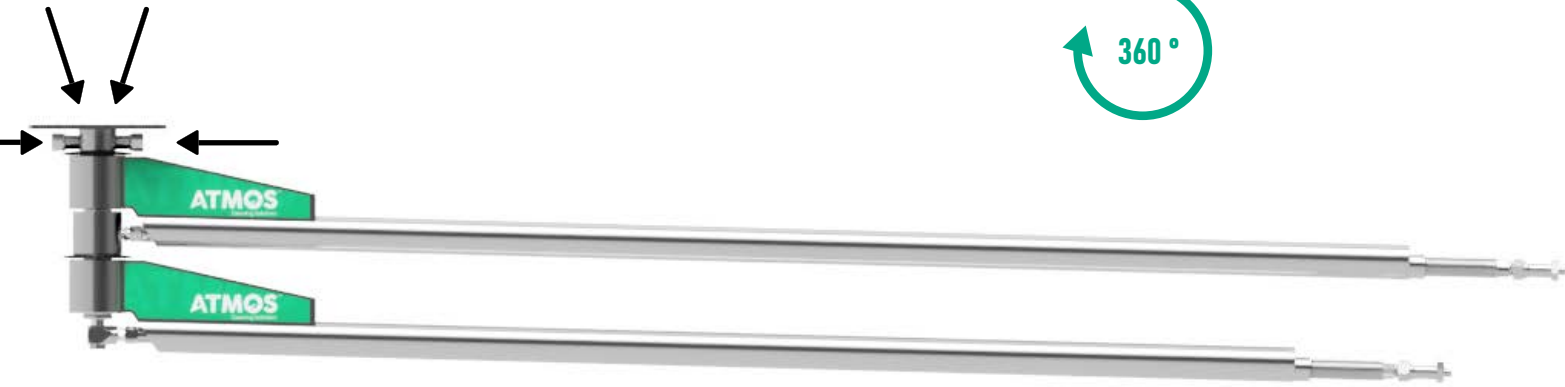
Burst pressure	Max. temperature	Side inlet	Top inlet	Outlet
275 bar	90°C	1/4" F	1/4" F	1/4" M

Catalogue no.	Name	Length [mm]	Weight [kg]**
8.01.01.003	Standard Ceiling Boom 850	850*	6,8
8.01.01.004	Standard Ceiling Boom 1550	1550*	8,5
8.01.01.005	Standard Ceiling Boom 1750	1750*	8,7
8.01.01.006	Standard Ceiling Boom 1950	1950*	9,2
8.01.01.007	Standard Ceiling Boom 2200	2200*	9,7
8.01.01.008	Standard Ceiling Boom 2500	2500*	10,4

* add about 200 mm for hose overhang

** allowable weight deviations +/- 0,2 kg

DOUBLE CEILING BOOM



Each boom has two inlets- top and side, which are located on upper boom.

PRODUCT SPECIFICATIONS

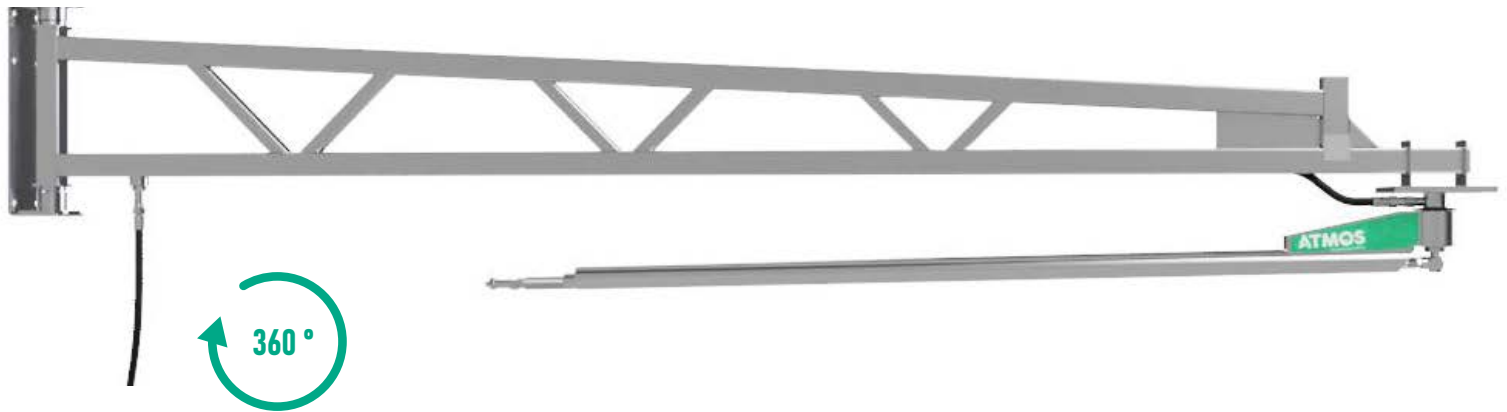
Burst pressure	Max. temperature	Side inlet	Top inlet	Outlet
275 bar	90°C	1/4" F	1/4" F	1/4" M

Catalogue no.	Name	First boom length [mm]	Second boom length [mm]	Weight [kg]**
8.01.01.10	Double Ceiling Boom	1450	1600	18,6
8.01.01.11	Double Ceiling Boom	1600	1750	18,9
8.01.01.12	Double Ceiling Boom	1750	1900	19,2
8.01.01.13	Double Ceiling Boom	1900	2050	19,5
8.01.01.14	Double Ceiling Boom	2050	2250	19,8
8.01.01.15	Double Ceiling Boom	2250	2500	21,1

* add about 200 mm for hose overhang

** allowable weight deviations +/- 0,2 kg

BOOMS WITH EXTENSION



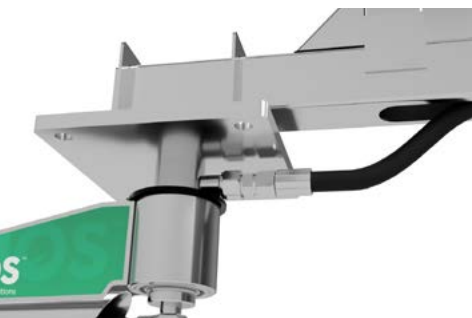
Wall boom extension with ceiling boom is destined for washing long vehicles. 360° rotation.



Extremely strong construction made with stainless steel truss. Inside the truss we placed high pressure hose with double steel braid. Burst pressure 400 bar.



Due to use of two bearings, rotation of boom extension is smooth and easy. Thick mounting plate guarantees safe and robust attachment.



Ceiling boom equipped with two stainless steel bearings enables smooth 360 degrees rotation. Durable and firm connection of boom extension with ceiling boom.



Application of swivel at the entrance of the boom prolongs hoses use.

Mounting plate ensures the highest level of security.



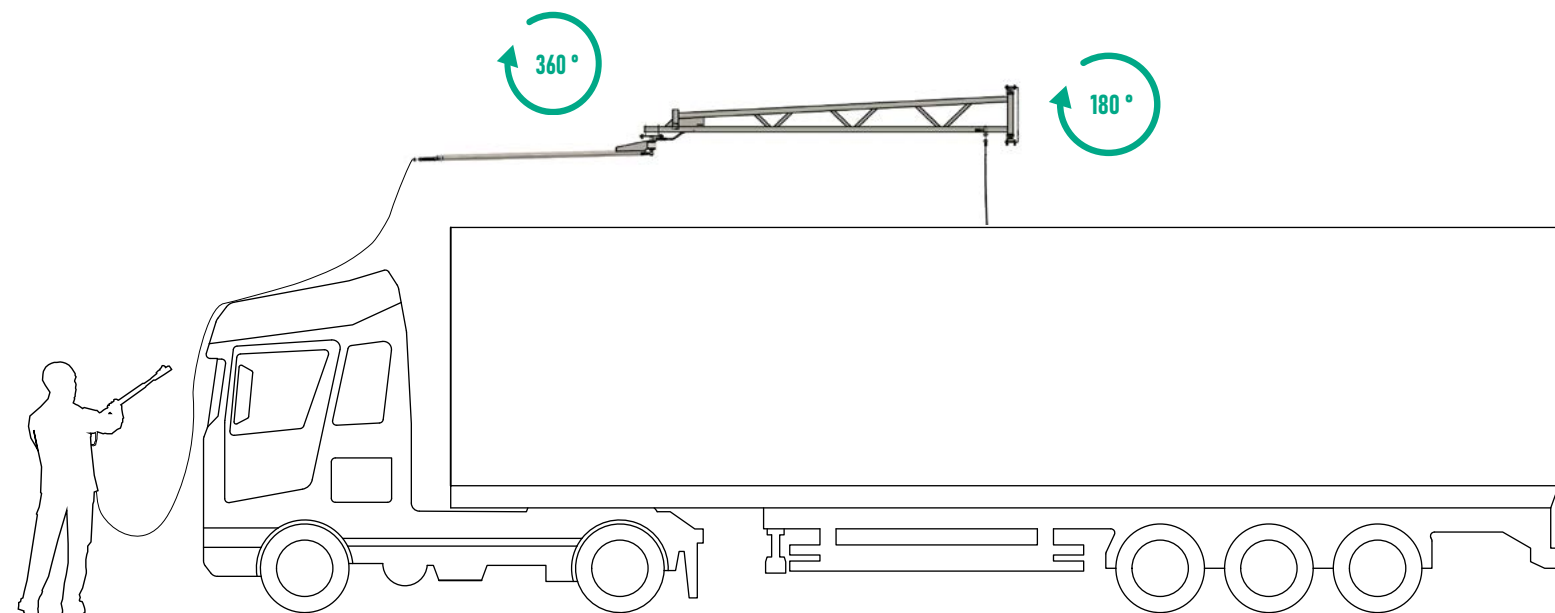
PRODUCT SPECIFICATIONS

Burst pressure	Max. temperature	Inlet	Outlet
275 bar	90°C	3/8" M	3/8" M

Catalogue no.	Name	Length [mm]	Weight [kg]**
8.01.01.005	Standard ceiling boom	1750	8,7
8.01.02.001	Boom extension	2948	29,3

* add about 200 mm for hose overhang

** allowable weight deviations +/- 0,2 kg



Accessories are made of polished stainless steel and significantly facilitate the assembly of the booms.



Catalogue no.

Name

Quantity of booms

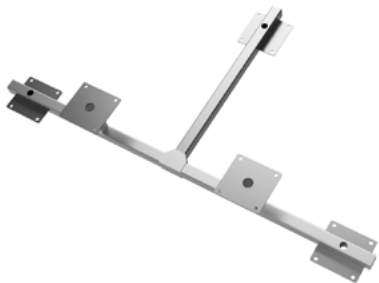
Weight [kg]**

8.01.03.001

Mounting frame for two Z booms

2

9,4



Catalogue no.

Name

Quantity of booms

Weight [kg]**

8.01.03.002

Mounting frame for three Z booms (option A)

3

20,6



Catalogue no.

Name

Quantity of booms

Weight [kg]**

8.01.03.003

Mounting frame for three Z booms (option B)

3

20



Catalogue no.

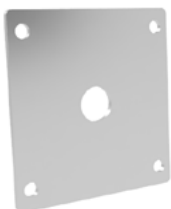
Name

Weight [kg]**

8.01.03.004

Wall mounting for standard and Z booms

3,5



Catalogue no.

Name

Weight [kg]**

8.01.03.005

Counter plate for standard and Z booms

1,6

Accessories are made of polished stainless steel and significantly facilitate the assembly of the booms.

Catalogue no.	Name	Weight [kg]**
8.01.03.006	Counter plate for boom extension	2,7



** allowable weight deviations +/- 0,2 kg

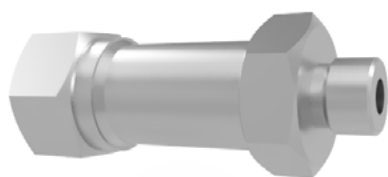
Buying original spare parts ensures efficient work of all accessories.



Catalogue no.	Name	Inlet	Outlet	Compatibility
200 320 550	Złącze obrotowe kątowe	1/4" M	1/4" F	8.01.01.001
				8.01.01.002
				8.01.01.003
				8.01.01.004
				8.01.01.005
				8.01.01.006
				8.01.01.007
				8.01.01.008



Catalogue no.	Name	Compatibility
200 320 490	Repair kit	200 320 550



Catalogue no.	Name	Inlet	Outlet	Compatibility
200 320 550	Złącze obrotowe proste	3/8" F	1/4" M	8.01.01.001
				8.01.01.002
				8.01.01.003
				8.01.01.004
				8.01.01.005
				8.01.01.006
				8.01.01.007
				8.01.01.008



Catalogue no.	Name	Inlet	Outlet	Compatibility
8.01.03.007	Sprężyna	3/8" F	1/4" M	8.01.01.001
				8.01.01.002
				8.01.01.003
				8.01.01.004
				8.01.01.005
				8.01.01.006
				8.01.01.007
				8.01.01.008

Buying original spare parts ensures efficient work of all accessories.

PRODUCT SPECIFICATIONS

Hose catalogue no.	Boom catalogue no.	Name	Inlet/Outlet
8.01.04.001	8.01.01.001	Z ceiling boom hose	any lenght and ferrule
8.01.04.002	8.01.01.002	Z ceiling boom hose	any lenght and ferrule
8.01.04.003	8.01.01.003	Standard ceiling boom hose	any lenght and ferrule
8.01.04.004	8.01.01.004	Standard ceiling boom hose	any lenght and ferrule
8.01.04.005	8.01.01.005	Standard ceiling boom hose	any lenght and ferrule
8.01.04.006	8.01.01.006	Standard ceiling boom hose	any lenght and ferrule
8.01.04.007	8.01.01.007	Standard ceiling boom hose	any lenght and ferrule
8.01.04.008	8.01.01.008	Standard ceiling boom hose	any lenght and ferrule
8.01.04.009	8.01.02.001	Boom extension hose	any lenght and ferrule





Brush holders are made of stainless steel and high gloss polished both inside and outside, which makes them more resistant to dirt. Ergonomics of holder means bigger volume, making removal of contamination from brush easier. Holder is more stable and robust due to use of thick stainless steel plate. Aesthetic and durable welding.



Tube with outlet into anti-freeze system. Additional outlet for emptying holder from possible contamination. Stable legs with holes for mounting, made of thick stainless steel plate.



Pulled out stainless steel grid prevents sand from settling on brush. Reliable water overflow to anti-freeze system.



There's possibility to order a holder with water overflow outlet on the back wall.

PRODUCT SPECIFICATIONS

Catalogue no.	Name	Width [cm]	Height [cm]	Depth [cm]	Weight [kg]
8.01.05.001	Brush holder- overflow from the bottom	33 cm	75 cm	14,2	10,3
8.01.05.002	Brush holder- overflow on the back wall	33 cm	70 cm	14,2 + overflow outlet	9,2

LANCE HOLDERS

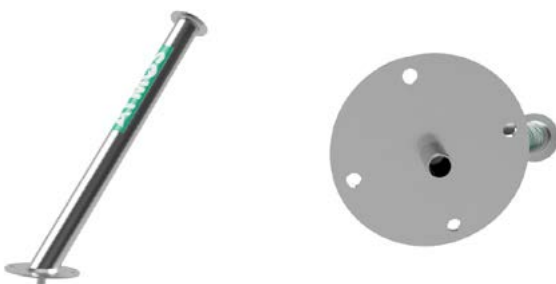


Lance holders are made of stainless steel and high gloss polished making cleanliness maintenance easier. Durable, made of a 2 mm thick pipe.



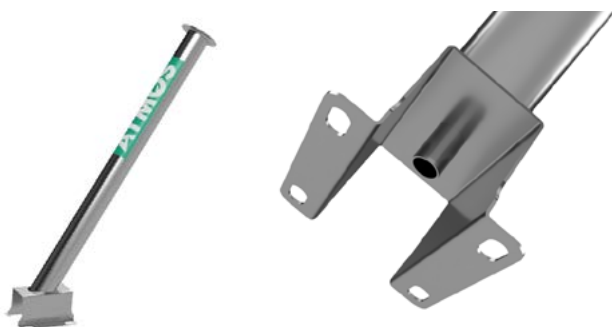
Broad flange protects gun from damage.

SINGLE LANCE HOLDER WITH FLANGE



Solid flange enables easy and stable mounting to the ground. Led out pipe allows water outlet to anti-freeze system.

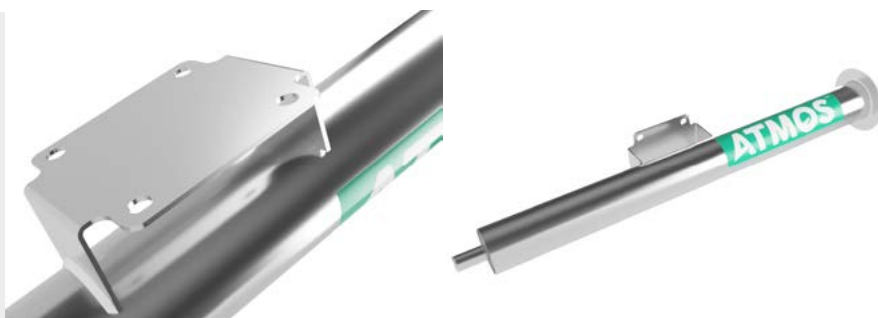
SINGLE LANCE HOLDER WITH STAND



Durable stand with anti-freeze system outlet. Allows connection to anti-freeze system, when the pipes are led over the floor.

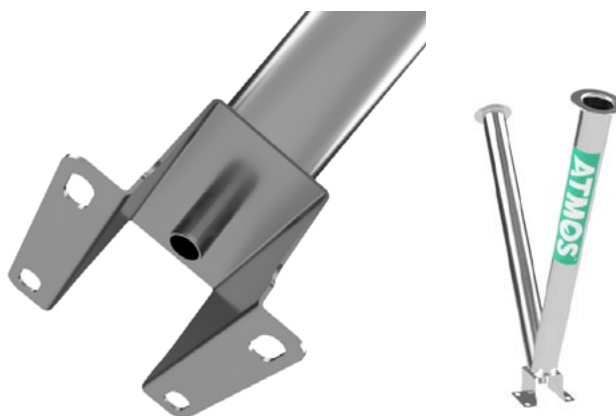
LANCE HOLDER FOR WALL MOUNTING

A reliable solution when mounting lance holder to the floor is not possible. It also has an outlet to anti-freeze system.



TWIN LANCE HOLDER

Allows water drainage from two lances to one outlet to anti-frost system.



PRODUCT SPECIFICATIONS

Catalogue no.	Name	Height [cm]	Weight [kg]
8.01.05.003	Single lance holder with flange	65	3,1
8.01.05.004	Single lance holder with stand	72	3,1
8.01.05.005	Twin lance holder	71	4,8
8.01.05.006	Lance holder for wall mounting	75	2,5