

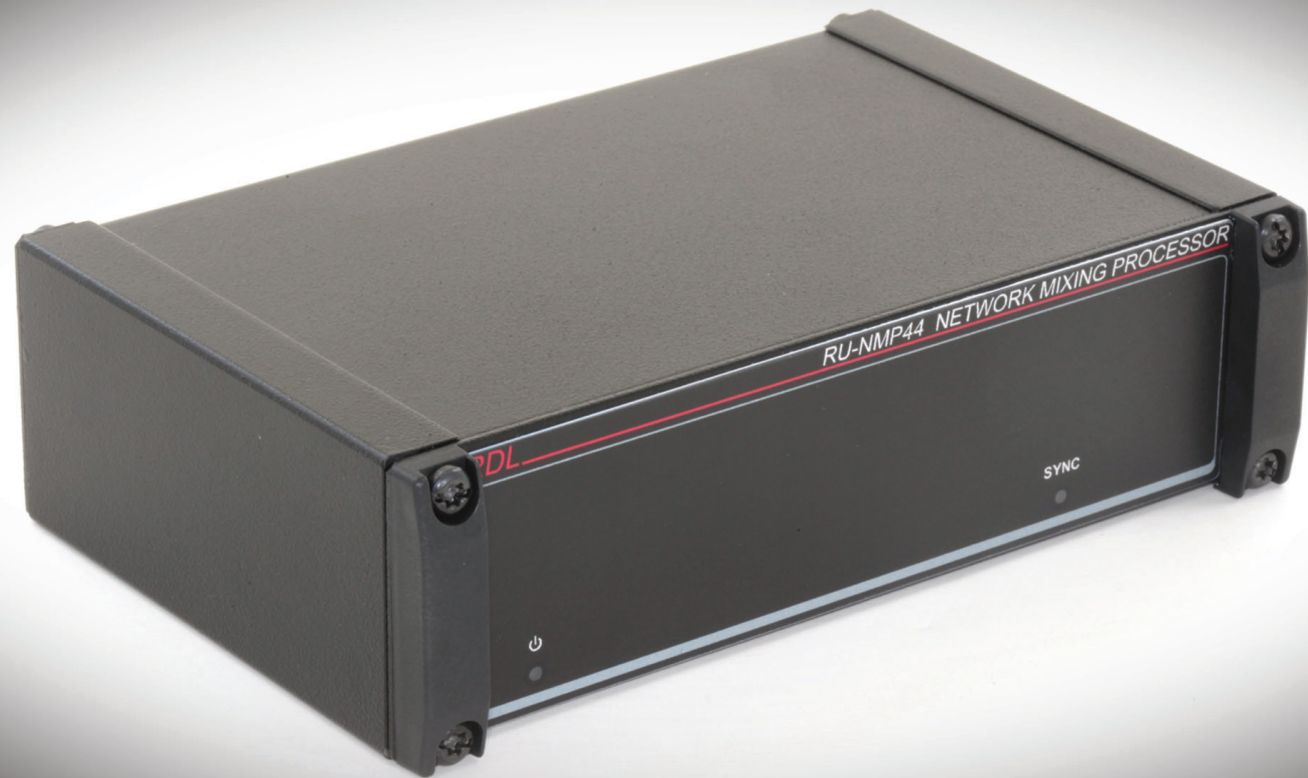


**RDL**

**RU-NMP44**

Network Mixing Processor

Meet the New  
Network **Control** Solution  
Created for **Any**  
**Audio System**



Optional Remote Controls

Network

Analog



D-NMC1



D-NLC1



D-RC4M

# RU-NMP44

Network Mixing Processor

## RDL is proud to introduce the RU-NMP44 Network Mixing Processor.

A simple to configure solution that delivers the flexibility of network audio for any system size or budget.

The RU-NMP44 feeds four Dante inputs to six virtual 4x1 mixers. Four mixers output to Dante channels while two output to balanced line level.

Each mixer features individual zone control with source selection, assignable automatic (VOX) priority ducking, selectable high pass filters and level control for all inputs and outputs.

Four presets are available to store and instantly recall system switching, mixing and audio level changes. It also offers several control options, including RDL's networked remote controls, to activate individual features.

Regardless of your budget, the RU-NMP44 is the ideal choice for designing individual systems or integrating into larger system designs.

