

SEMI AUTOMATIC
USER'S MANUAL



INDEX

SEMI AUTOMATIC	1	STOCK ADJUSTMENT KIT USAGE	24
WARNING AND SAFETY	2	STOCK ADJUSTMENT KIT	27
WARNINGS	3	DIFFERENT SIZE BUTT PAD USAGE	28
VEYRON	4	PART DIAGRAM	29
ASSEMBLING AND USAGE	5	PART LIST	30
LOADING AND UNLOADING	7	G12	31
MAINTENANCE OF SHOTGUN	10	ASSEMBLING AND USAGE	32
MOBILE CHOKE - MAGAZINE PLUG.....	12	LOADING AND UNLOADING	34
STOCK ADJUSTMENT KIT USAGE	13	MAINTENANCE OF SHOTGUN	36
STOCK ADJUSTMENT KIT	14	MOBILE CHOKE - MAGAZINE PLUG	37
PART DIAGRAM	15	PART DIAGRAM	38
PART LIST	16	PART LIST	39
RENOVA	17	STOCK ADJUSTMENT KIT SHEET	40
ASSEMBLING AND USAGE	18		
LOADING AND UNLOADING	20		
MOBILE CHOKE - MAGAZINE PLUG	23		

SEMI AUTOMATIC

Ergonomic designs which are meant for perfect shooting experience.

For efficient grouping, sturdy and lightweight frame is accompanied by a barrel which is made of Italian steel. All these components come together in Huglu's semi automatic shotguns. Our experience of one century is presented for your enjoyment through semi automatic product range of ours.



Dear user

-We thank you very much choosing our fine art product.

-We expect your respect to the nature while using our products.

-We intend to continue for providing best guns and servicing for centuries to come.

- Do not forget ever firearms is different however much you are experienced.

- Please understand the mean that the first step of safety is yourself. Your shotgun is anon living

thing, cannot think of safety. You manage it and only using carelessly causes accidents!

- Never use your shotgun when you are drunk, had drugs, when riding, when driving and when you feel yourself unwell.

- Do not shoots at hard surfaces very close and with a

shallow angle because of skipping possibility.

- While shooting use protection material for your eyes and ears.

- Always keep your shotgun and cartridges away from the children that they cannot reach. If

possible in a locked safe place.

- Use the correct ammunition according to you shotgun's specifications.

- Do not shoot your shotgun without choke tubes and be sure the choke tubes are properly fitted in the muzzle. (On multi choke shotguns only)

- Never keep your hand in front of muzzle when shotgun is loaded.

- Be careful! to follow the instructions correctly when assembling, dismantling and/or maintaining

and cleaning your shotgun to avoid injuries.

- Before shooting be sure that inside of the barrel is exactly clean.



WARNING AND SAFETY

BEFORE USING YOUR GUN, PLEASE READ CAREFULLY USER MANUAL

IMPORTANT WARNING:
BEFORE DISASSEMBLING SHOTGUN

- 1) POINT THE GUN TO A SAFETY PLACE.
- 2) MAKE SURE THAT EMPTY MAGAZINE.
- 3) BE SURE THAT CHAMBER IS EMPTY.



WARNINGS

- *PLEASE USE MAX 1400 BARS CARTRIDGES.*
- *IF YOU NEED FURTHER DETAILED MAINTENANCE OR REPAIR GET AN AUTHORISED SERVICE.*
- *MAKE THE MAINTENANCE OF YOUR SHOTGUN AFTER EVERY SHOOTING OR HUNTING.*
- *ALWAYS KEEP YOUR SHOTGUN AND CARTRIDGES AWAY FROM THE CHILDREN THAT THEY CAN NOT REACH.*
- *NEVER TARGET YOUR SHOTGUN TO HUMAN BEING.*
- *PLEASE DO NOT LEAVE YOUR EMPTY CARTRIDGES TO THE NATURE.*
- *NEVER KEEP YOUR SHOTGUN LOADED IN YOUR HOME OR VEHICLE. ALWAYS TAKE CARE TO KEEP YOUR SHOTGUN SAFE.*

V E Y R O N

Remove the magazine cap in front of the forearm by turning it counter-clockwise.



Dismantle the forend by pushing forward.



Unscrew the supporter nut off the front of the magazine.



Slide the barrel lug over the magazine tube.





While assembling the barrel, pull back the bolt handle approximately one inch to the rear allowing for easier alignment of the barrel. Make sure the barrels seats completely into the receiver.



Assemble the forearm over the magazine tube and barrel. Make sure that the forearm is seated completely into the flange at the front of the receiver.



Tighten the supporter nut on the magazine tube.



Tighten the magazine cap by turning clockwise.

Loading 1:

Pull the cocking bolt handle rearward until the action locks open. Push the bolt release button on the right side of the receiver. Mechanism will slide strongly forward.



Push the safeth latch at the front of the trigger guard fully to the right. Be sure that red color is not seen.



Insert shells into the magazine tube until they lock. Repeat the operation until you have loaded the desired amount of the shells. Make sure to load only suitable cartridges according to your shotgun's caliber & chamber specifications.



After filling push the cartridge drop lever to allow the cartridge to drop onto the carrier.





Pull the bolt handle back until the bolt locks in the rearward position. Push the bolt release button as seen in picture.



Pull the bolt handle to the rear to eject the round from the chamber.



Note: The bolt must be allowed to close forcefully to fully chamber the round. One cartridge from the magazine is now chambered. You can now place another cartridge into the magazine to replace the chambered round. Now the gun is fully loaded. Push the safety to the left when you are ready to fire. You will see the red color. Make sure your finger is not in contact with the trigger as you are taking the safety off. Now your shotgun is ready to fire. When you fire, your shotgun will automatically eject the fired cartridge and replace it with one from the magazine, until the gun is empty of ammunition. At this point, the bolt will remain locked open, indicating that all rounds have been fired.



Push the carrier and depress on the back of the bolt release button. Cartridges will drop down to your finger on the carrier. Take out the cartridge. Repeat this operation until the magazine is empty. Depress the cartridge drop lever at the back of the carrier and pull the bolt handle rearward until the bolt locks open, demonstrating that the gun is completely unloaded.

Loading 2:

Pull the bolt handle rearward until the bolt locks open.



Drop the first cartridge in the receiver.



Push the bolt release button and engage the safety.



Keep loading the magazine.



Remove the magazine cap in front of the forearm by turning it counter-clockwise. Take off the forearm by pushing forward.



Unscrew the supporter nut on the magazine tube and take out.



Slide the gas piston off.



Insert the cleaning stick into the gas port holes to clean.





◀ Clean the gas port by using a gun cleaning oil and soft cloth.



◀ Clean the inside and outside of the piston by using the same method.



◀ Push the latch (cartridge drop lever) under the trigger group. Pull back the bolt handle. Clean the outer surface of magazine tube with a soft cloth.

General Maintenance Instructions

- Clean the barrel bore by passing a swab or cleaning patch through it to remove residue. If necessary, use a cleaning rod with a bore brush soaked in bore cleaning solvent.
- Run a clean dry cloth through the bore to remove excess residue.
- Lightly oil the inside of the barrel with clean patch coated with oil.
- Do not apply excess oil, grease or solvent. Excess cleaning fluids attract dirt, which can interfere with the function of the gun.
- Clean and lightly oil the external surface of the gun to remove any trace of dirt, moisture and fingerprints. "Push the bolt release button while holding the bolt handle and allow the bolt to close slowly.
- Do not allow the bolt to close under force, since this may cause damage to the receiver.
- To assemble your shotgun, reverse the disassembly instructions.
- If you need further detailed maintenance contact a professional gunsmith.



Mobile Choke Usage:

In multi choke models please take care not to shoot without the choke tubes supplied together with your shotgun. Choke tubes provide to go the shots logo out of the barrel messy or dense according to your hunt choice, Choke tubes are numerated with small notches. Shots go more messy out of the barrel according to this choke numbers from smaller to bigger. The table given below will be helpful for usage. While replacing the choke tubes, take care the notched end will be upside.



THE DEFINITION AND THE USAGE OF CHOKE TUBES				
Pattern With Lead Shot		Pattern With Steel Shot	Mark	Best In The Area Of
★	Full	Not Recommended		Turkey
★★	Imp Mod	Not Recommended		Waterfowling
★★★	Mod	Not Recommended		Waterfowling, Upland Hunting
★ ★★★	Imp Cyl	Mod		Upland Hunting
★★ ★★★	Cyl	Imp Cyl		Upland Hunting



Magazine Plug:

The capacity of the shotgun that you own can be 4+1 or 7+1 but your shotgun is delivered to you as 2+1 Consumer can change the capacity of the shotgun by assembling and dismantling the wedge inside the magazine.



◀ Unscrew the butt pad screws by using a phillips screwdriver and take the butt pad out.




◀ Unscrew the stock bolt using a socket wrench and remove the stock from the receiver.



◀ Remove the “STANDART” marked shim from the receiver. (Your shotgun comes with “STANDART” shim that gives a no cast stock.) Use the shim/shims according to your body dimensions.



◀ After the stock is set with shims, assemble the stock to the receiver and the butt pad.

 The shims shown in this page belongs to VEYRON model.



Standart Drop Shim



U/1%
Drop Shim (UP)



U/2%
Drop Shim (UP)



D/1%
Drop Shim (DOWN)

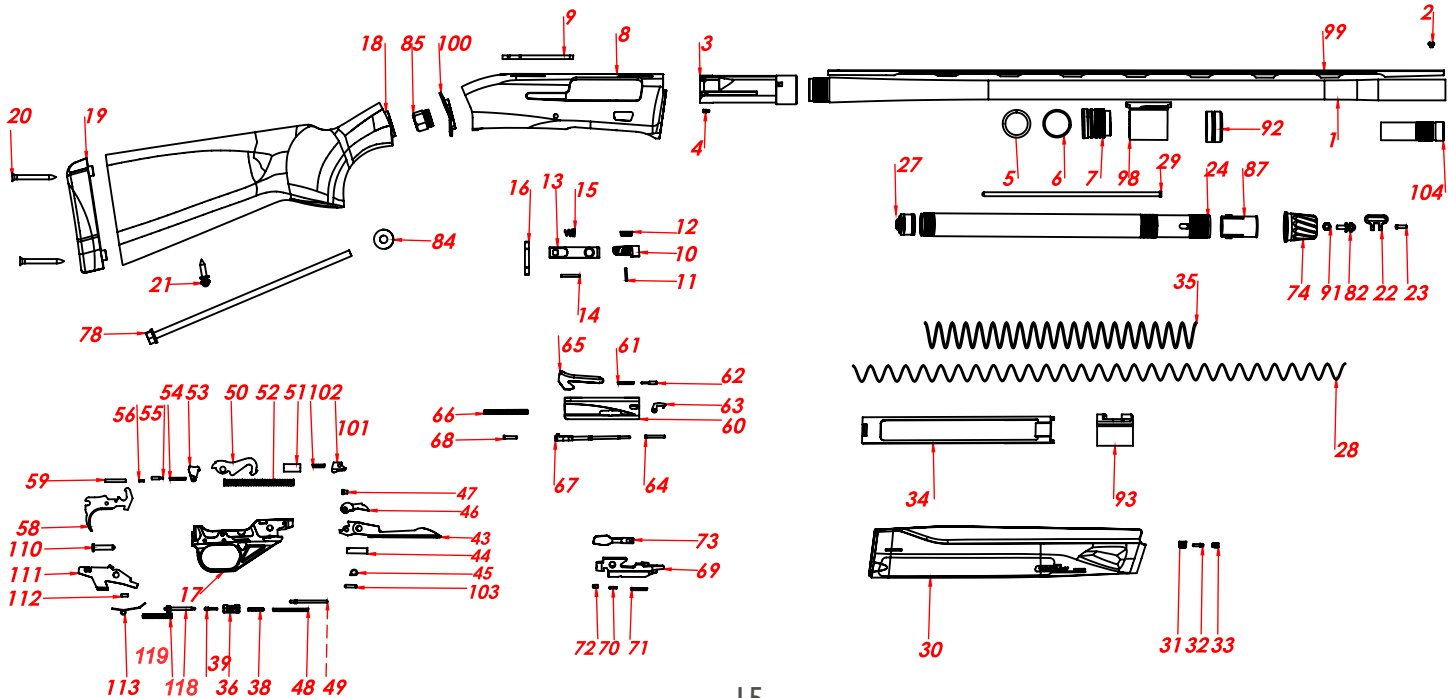


D/2%
Drop Shim (DOWN)

Cast Shim



The shim with letter "L" is used for cast on (left handed) stock.
The shim with letter "R" is used for cast off (right handed) stock.
(There are two different shims.)



NO	PART NAME
1	BARREL
2	FRONT BEAD
3	BEARING BOLT
4	EJECTOR
5	RUBBER GAS RING
6	GAS PISTON WASHER
7	GAS PISTON
8	RECEIVER
9	TRACER WEDGE
10	BOLT RELEASE
11	BOLT RELEASE PIN
12	BOLT RELEASE SPRING
13	BOLT RELEASE LATCH
14	BOLT RELEASE LATCH PIN
15	BOLT RELEASE LATCH SPRING
16	TRIGGER GUARD PIN
17	TRIGGER GUARD
18	STOCK
19	BUTT PLATE
20	BUTT PLATE SCREW
21	STOCK SWIVEL STUD
22	SWIVEL
23	SWIVEL PIN
24	MAGAZINE TUBE
25	FOREARM SUPPORT RING
26	FOREARM PLATE RING
27	MAGAZINE FOLLOWER
28	MAGAZINE SPRING
29	MAGAZINE PLUG
30	FOREARM

NO	PART NAME
31	MAGAZINE CAP SPRING
32	MAGAZINE CAP PIN
33	MAGAZINE CAP SCREW
34	ACTION BAR
35	ACTION SPRING
36	SAFETY
37	SAFETY PLUNGER
38	SAFETY SPRING
39	SAFETY SPRING PLUNGER
40	CARRIER SPRING
41	CARRIER PLUNGER
42	CARRIER RETAINING PIN
43	CARRIER
44	TRIGGER ASSEMBLY PIN SLEEVE
45	TRIGGER ASSEMBLY PIN RETAINER
46	CARRIER DOG
47	CARRIER DOG PIN
48	CARRIER DOG SPRING
49	CARRIER DOG PLUNGER
50	HAMMER
51	HAMMER PLUNGER
52	HAMMER SPRING
53	SEAR
54	SEAR SPRING
55	SEAR PLUNGER
56	SEAR PIN
57	TRIGGER SPRING
58	TRIGGER
59	TRIGGER PIN
60	BREECH BOLT

NO	PART NAME
61	EXTRACTOR SPRING
62	EXTRACTOR SPRING PIN
63	EXTRACTOR
64	EXTRACTOR RETAINING PIN
65	LOCKING BLOCK
66	FIRING PIN SPRING
67	FIRING PIN
68	FIRING PIN RETAINER
69	BOLT BLOCK
70	BOLT LEVER BLOCK PIN
71	BOLT LEVER BLOCK SPRING
72	BOLT LEVER BLOCK SPRING PIN
73	OPERATING HANDLE
74	MAGAZINE CAP
75	ACTION PIPE
76	ACTION SUPPORTER
77	ACTION SUPPORTER PIN
78	STOCK BOLT
79	MAGAZINE CAP SUPPORT
80	7+1 SWIVEL
81	7+1 MAGAZINE CAP
82	MAGAZINE CAP SWIVEL HOLDER
83	ACTION TUBE
84	STOCK BOLT WASHER
85	STOCK BOLT RECEIVER
86	STOCK BOLT RING
87	MAGAZINE SPRING RETAINER
88	MAGAZINE PLUG RETAINER
89	PLUG PLATE
90	MAGAZINE CAP INTERIOR

NO	PART NAME
91	SWIVEL STUD RETAINER
92	SUPPORTER NUT
93	ACTION BAR SLEEVE
94	LOCKING HEAD
95	LOCKING HEAD PIN
96	LOCKING HEAD SPRING
97	MAGAZINE CAP SPRING
98	BARREL LUG
99	TOP RIB
100	STOCK ADJUSTMENT SHIM
101	HAMMER SAFETY
102	HAMMER SAFETY SPRING
103	HAMMER SAFETY PIN
104	MOBILE CHOKE
105	EJECTOR SPRING
106	EJECTOR SPRING PIN
107	EJECTOR PIN
108	EJECTOR RETAINING PIN 1
109	EJECTOR RETAINING PIN 2
110	HAMMER SPRING PIN
111	CARTRIDGE DROP LEVER
112	CARTRIDGE DROP LEVER SPRING PIN
113	CARTRIDGE DROP LEVER SPRING
114	STOCK ADJUSTMENT PLATE
115	STOCK SUPPORTER TUBE
116	DAMPER SPRING
117	DAMPER SPRING PLUG
118	TRIGGER PUSHING PIN
119	TRIGGER PUSHING PIN SPRING

RENOVA

Remove the magazine cap in front of the forearm by turning it counter-clockwise.



Dismantle the forend by pushing forward.



Attach the forearm to the barrel by slotting the barrel lug into the forearm.



Make sure that the forearm seats into its place completely.





Pull the bolt handle back until the bolt locks open and slide the forearm together with the barrel over the magazine tube.



Polymer Stock Assembly:
After you pull the bolt handle back assemble the barrel into the receiver.



Do not push the bolt release button when the barrel is off!



Polymer Stock Assembly:
Slide the forearm over the magazine tube.



Tighten the magazine cap in front of the forearm by turning it clockwise.

Loading 1:

Pull the cocking bolt handle rearward until the action locks open. Push the bolt release button on the right side of the receiver. Mechanism will slide strongly forward.



Push the safeth latch at the front of the trigger guard fully to the right. Be sure that red color is not seen.



Insert shells into the magazine tube until they lock. Repeat the operation until you have loaded the desired amount of the shells. Make sure to load only suitable cartridges according to your shotgun's caliber & chamber specifications.



After filling, push the cartridge drop lever to allow the cartridge to drop onto the carrier.





Pull the bolt handle back until the bolt locks in the rearward position. Push the bolt release button as seen in picture.



Pull the bolt handle to the rear to eject the round from the chamber.



Note: The bolt must be allowed to close forcefully to fully chamber the round. One cartridge from the magazine is now chambered. You can now place another cartridge into the magazine to replace the chambered round. Now the gun is fully loaded. Push the safety to the left when you are ready to fire. You will see the red color. Make sure your finger is not in contact with the trigger as you are taking the safety off. Now your shotgun is ready to fire. When you fire, your shotgun will automatically eject the fired cartridge and replace it with one from the magazine, until the gun is empty of ammunition. At this point, the bolt will remain locked open, indicating that all rounds have been fired.



Push the carrier and depress on the back of the bolt release button. Cartridges will drop down to your finger on the carrier. Take out the cartridge. Repeat this operation until the magazine is empty. Depress the cartridge drop lever at the back of the carrier and pull the bolt handle rearward until the bolt locks open, demonstrating that the gun is completely unloaded.

Loading 2:
Pull the bolt handle rearward until the bolt locks open.



Drop the first
cartridge in the
receiver.



Push the bolt release
button and engage the
safety.



Keep loading the
magazine.





Mobile Choke Usage:

In multi choke models please take care not to shoot without the choke tubes supplied together with your shotgun. Choke tubes provide to go the shots logo out of the barrel messy or dense according to your hunt choice, Choke tubes are numerated with small notches. Shots go more messy out of the barrel according to this choke numbers from smaller to bigger. The table given below will be helpful for usage. While replacing the choke tubes, take care the notched end will be upside.

THE DEFINITION AND THE USAGE OF CHOKE TUBES				
Pattern With Lead Shot		Pattern With Steel Shot	Mark	Best In The Area Of
★	Full	Not Recommended		Turkey
★★	Imp Mod	Not Recommended		Waterfowling
★★★	Mod	Not Recommended		Waterfowling, Upland Hunting
★ ★★★	Imp Cyl	Mod		Upland Hunting
★★ ★★★	Cyl	Imp Cyl		Upland Hunting



Magazine Plug:

The capacity of the shotgun that you own can be 4+1 or 7+1 but your shotgun is delivered to you as 2+1 Consumer can change the capacity of the shotgun by assembling and dismantling the wedge inside the magazine.



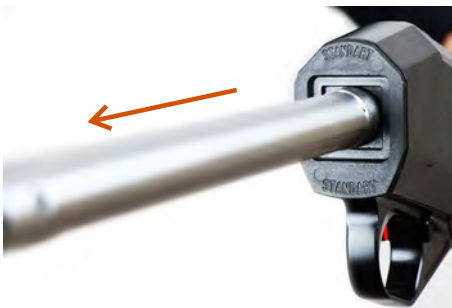
▶ Unscrew the butt pad screws by using a phillips screwdriver and take the butt pad out.



▶ Unscrew the stock bolt using a socket wrench and remove the stock from the receiver.



▶ Remove the stock and take the stock supporter tube out.



▶ Remove the "STANDART" marked shim from the action tube. (Your shotgun comes with "STANDART" shim that gives no cast stock.) Use the shim/shims according to your body dimensions.



Sample
To make the stock cast on (left handed) and upper, follow the instructions below; Place the cast shim to the back of the receiver while the marking "L-R" is visible.



Place the drop shim with markings "U/ 1%" to the back of cast shim for up-down arrangement.



Drop and cast shims must fit when inserted.



Insert the cast plate (L) into the stock while the letter "L" is visible. (Your shotgun comes with "R" visible cast plate that gives no cast stock when used with "STANDART" drop shim.)

! Even if you want no cast on the stock, cast plate "R" must be inserted into the stock.




Place the stock over the action tube and put the stock supporter tube into the stock.




Screw the stock using a socket wrench.



 The cast plates for polymer stock are different from the once for wooden stock.



Screw the butt pad screws by using a phillips screwdriver.

 The shims shown in this page belongs to RENOVA model.



Standart Drop Shim



U/1%
Drop Shim (UP)



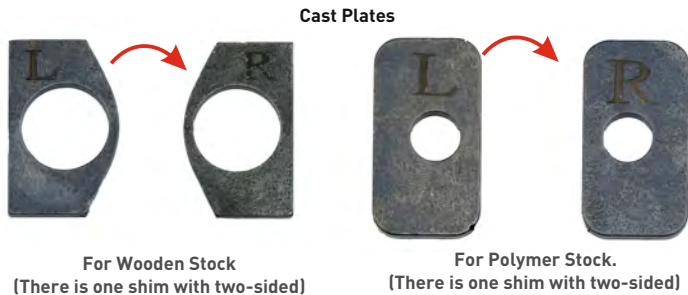
U/2%
Drop Shim (UP)



D/1%
Drop Shim (DOWN)



D/2%
Drop Shim (DOWN)






The gun comes with mid size butt pad. If you want to change the butt pad with a different size one, unscrew the butt pad screws by using a phillips screwdriver and assemble the butt pad you want to use.



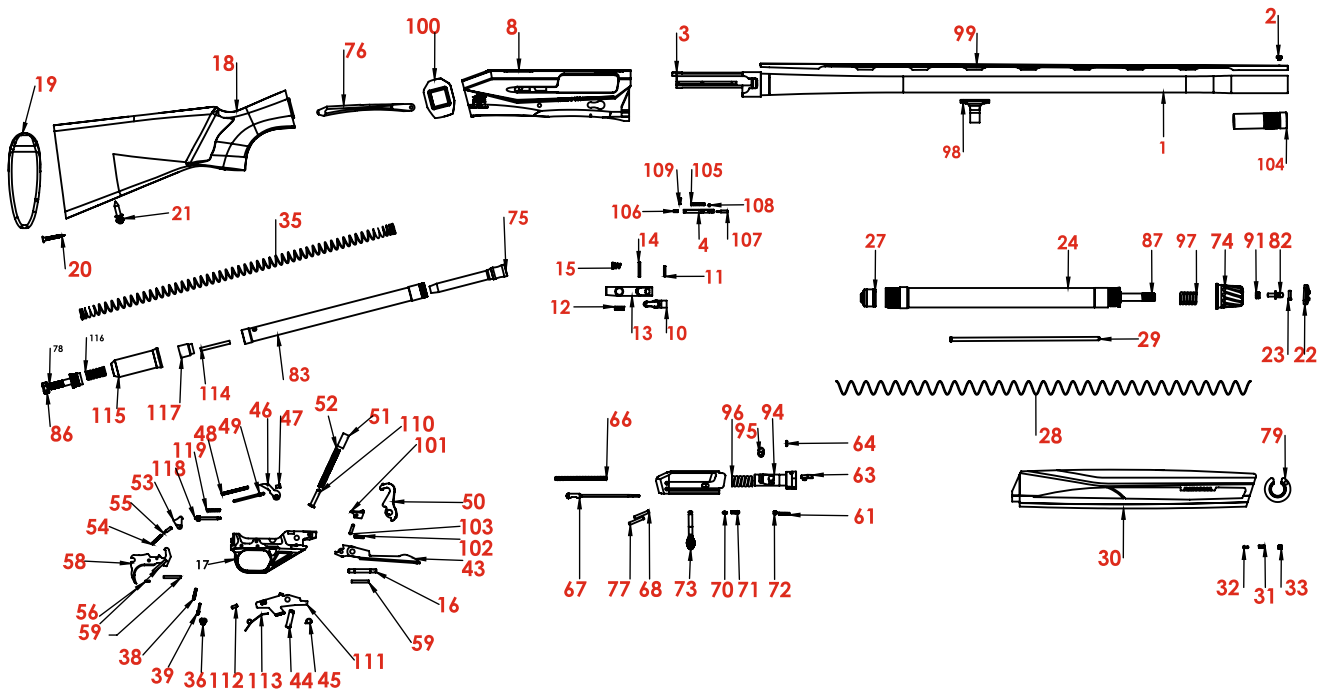
If the gun is wooden stock, you have to use the washer shown in the red circle in the picture together with the butt pad.



 Don't use the washer if the gun has a polymer stock.



Assemble the butt pad you want to use by using phillips screwdriver.




NO	PART NAME
1	BARREL
2	FRONT BEAD
3	BEARING BOLT
4	EJECTOR
5	RUBBER GAS RING
6	GAS PISTON WASHER
7	GAS PISTON
8	RECEIVER
9	TRACER WEDGE
10	BOLT RELEASE
11	BOLT RELEASE PIN
12	BOLT RELEASE SPRING
13	BOLT RELEASE LATCH
14	BOLT RELEASE LATCH PIN
15	BOLT RELEASE LATCH SPRING
16	TRIGGER GUARD PIN
17	TRIGGER GUARD
18	STOCK
19	BUTT PLATE
20	BUTT PLATE SCREW
21	STOCK SWIVEL STUD
22	SWIVEL
23	SWIVEL PIN
24	MAGAZINE TUBE
25	FOREARM SUPPORT RING
26	FOREARM PLATE RING
27	MAGAZINE FOLLOWER
28	MAGAZINE SPRING
29	MAGAZINE PLUG
30	FOREARM

NO	PART NAME
31	MAGAZINE CAP SPRING
32	MAGAZINE CAP PIN
33	MAGAZINE CAP SCREW
34	ACTION BAR
35	ACTION SPRING
36	SAFETY
37	SAFETY PLUNGER
38	SAFETY SPRING
39	SAFETY SPRING PLUNGER
40	CARRIER SPRING
41	CARRIER PLUNGER
42	CARRIER RETAINING PIN
43	CARRIER
44	TRIGGER ASSEMBLY PIN SLEEVE
45	TRIGGER ASSEMBLY PIN RETAINER
46	CARRIER DOG
47	CARRIER DOG PIN
48	CARRIER DOG SPRING
49	CARRIER DOG PLUNGER
50	HAMMER
51	HAMMER PLUNGER
52	HAMMER SPRING
53	SEAR
54	SEAR SPRING
55	SEAR PLUNGER
56	SEAR PIN
57	TRIGGER SPRING
58	TRIGGER
59	TRIGGER PIN
60	BREECH BOLT

NO	PART NAME
61	EXTRACTOR SPRING
62	EXTRACTOR SPRING PIN
63	EXTRACTOR
64	EXTRACTOR RETAINING PIN
65	LOCKING BLOCK
66	FIRING PIN SPRING
67	FIRING PIN
68	FIRING PIN RETAINER
69	BOLT BLOCK
70	BOLT LEVER BLOCK PIN
71	BOLT LEVER BLOCK SPRING
72	BOLT LEVER BLOCK SPRING PIN
73	OPERATING HANDLE
74	MAGAZINE CAP
75	ACTION PIPE
76	ACTION SUPPORTER
77	ACTION SUPPORTER PIN
78	STOCK BOLT
79	MAGAZINE CAP SUPPORT
80	7+1 SWIVEL
81	7+1 MAGAZINE CAP
82	MAGAZINE CAP SWIVEL HOLDER
83	ACTION TUBE
84	STOCK BOLT WASHER
85	STOCK BOLT RECEIVER
86	STOCK BOLT RING
87	MAGAZINE SPRING RETAINER
88	MAGAZINE PLUG RETAINER
89	PLUG PLATE
90	MAGAZINE CAP INTERIOR

NO	PART NAME
91	SWIVEL STUD RETAINER
92	SUPPORTER NUT
93	ACTION BAR SLEEVE
94	LOCKING HEAD
95	LOCKING HEAD PIN
96	LOCKING HEAD SPRING
97	MAGAZINE CAP SPRING
98	BARREL LUG
99	TOP RIB
100	STOCK ADJUSTMENT SHIM
101	HAMMER SAFETY
102	HAMMER SAFETY SPRING
103	HAMMER SAFETY PIN
104	MOBILE CHOKE
105	EJECTOR SPRING
106	EJECTOR SPRING PIN
107	EJECTOR PIN
108	EJECTOR RETAINING PIN 1
109	EJECTOR RETAINING PIN 2
110	HAMMER SPRING PIN
111	CARTRIDGE DROP LEVER
112	CARTRIDGE DROP LEVER SPRING PIN
113	CARTRIDGE DROP LEVER SPRING
114	STOCK ADJUSTMENT PLATE
115	STOCK SUPPORTER TUBE
116	DAMPER SPRING
117	DAMPER SPRING PLUG
118	TRIGGER PUSHING PIN
119	TRIGGER PUSHING PIN SPRING



G-12

Remove the magazine cap in front of the forearm by turning it counter-clockwise.



Dismantle the forend by pushing forward.



Unscrew the supporter nut off the front of the magazine.



Slide the barrel lug over the magazine tube.





While assembling the barrel, pull back the bolt handle approximately one inch to the rear allowing for easier alignment of the barrel. Make sure the barrels seats completely into the receiver.



Tighten the supporter nut on the magazine tube.



Assemble the forearm over the magazine tube and barrel. Make sure that the forearm is seated completely into the flange at the front of the receiver.



Tighten the magazine cap by turning clockwise.

Pull the cocking bolt handle rearward until the action locks open. Push the bolt release button on the right side of the receiver. Mechanism will slide strongly forward.



Push the safeth latch at the front of the trigger guard fully to the right. Be sure that red color is not seen.



Insert shells into the magazine tube until they lock. Repeat the operation until you have loaded the desired amount of the shells. Make sure to load only suitable cartridges according to your shotgun's caliber & chamber specifications.



After filling push the cartridge drop lever to allow the cartridge to drop onto the carrier.





Pull the bolt handle back until the bolt locks in the rearward position. Push the bolt release button as seen in picture.



Pull the bolt handle to the rear to eject the round from the chamber.



Note: The bolt must be allowed to close forcefully to fully chamber the round. One cartridge from the magazine is now chambered. You can now place another cartridge into the magazine to replace the chambered round. Now the gun is fully loaded. Push the safety to the left when you are ready to fire. You will see the red color. Make sure your finger is not in contact with the trigger as you are taking the safety off. Now your shotgun is ready to fire. When you fire, your shotgun will automatically eject the fired cartridge and replace it with one from the magazine, until the gun is empty of ammunition. At this point, the bolt will remain locked open, indicating that all rounds have been fired.



Push the carrier and depress on the back of the bolt release button. Cartridges will drop down to your finger on the carrier. Take out the cartridge. Repeat this operation until the magazine is empty. Depress the cartridge drop lever at the back of the carrier and pull the bolt handle rearward until the bolt locks open, demonstrating that the gun is completely unloaded.



Clean the gas port by using a gun cleaning oil and soft cloth.



Push the latch (cartridge drop lever) under the trigger group. Pull back the bolt handle. Clean the outer surface of magazine tube with a soft cloth.



Clean the inside and outside of the piston by using the same method.

General Maintenance Instructions

- Clean the barrel bore by passing a swab or cleaning patch through it to remove residue. If necessary, use a cleaning rod with a bore brush soaked in bore cleaning solvent.
- Run a clean dry cloth through the bore to remove excess residue.
- Lightly oil the inside of the barrel with clean patch coated with oil.
- Do not apply excess oil, grease or solvent. Excess cleaning fluids attract dirt, which can interfere with the function of the gun.
- Clean and lightly oil the external surface of the gun to remove any trace of dirt, moisture and fingerprints. "Push the bolt release button while holding the bolt handle and allow the bolt to close slowly.
- Do not allow the bolt to close under force, since this may cause damage to the receiver.
- To assemble your shotgun, reverse the disassembly instructions.
- If you need further detailed maintenance contact a professional gunsmith.



Mobile Choke Usage:

In multi choke models please take care not to shoot without the choke tubes supplied together with your shotgun. Choke tubes provide to go the shots logo out of the barrel messy or dense according to your hunt choice, Choke tubes are numerated with small notches. Shots go more messy out of the barrel according to this choke numbers from smaller to bigger. The table given below will be helpful for usage. While replacing the choke tubes, take care the notched end will be upside.

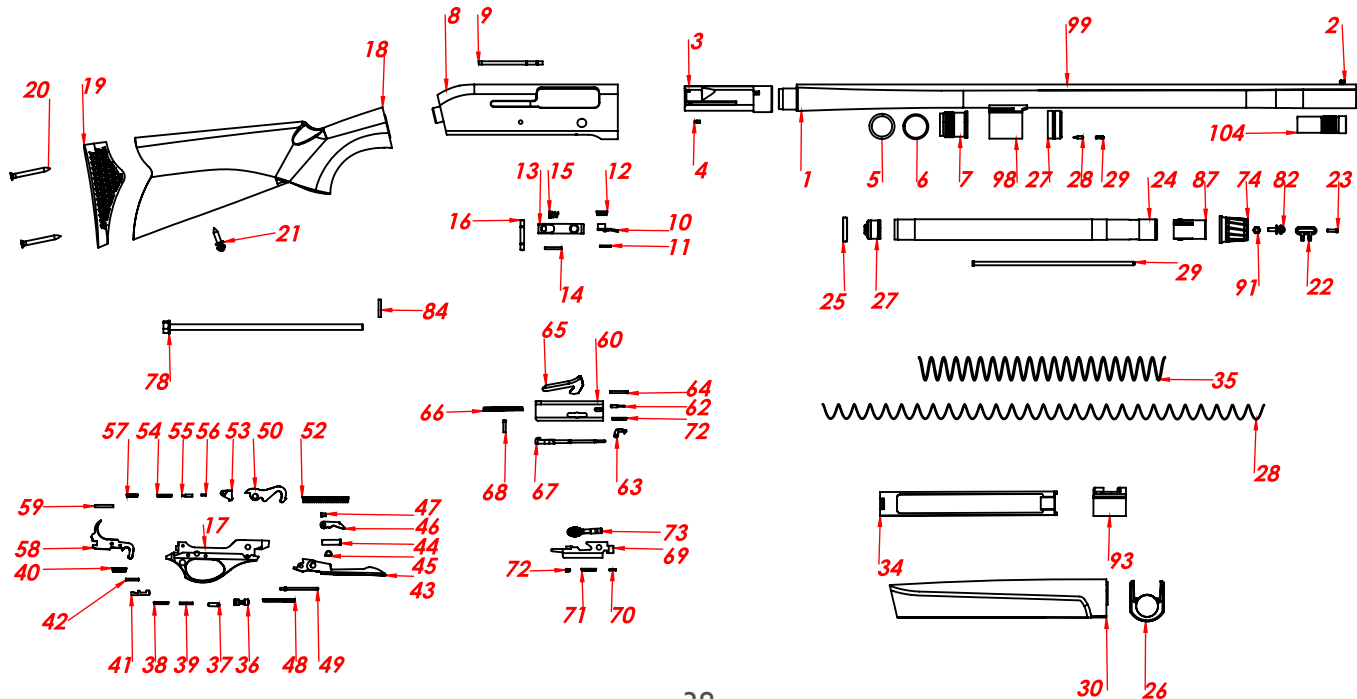


THE DEFINITION AND THE USAGE OF CHOKE TUBES			
Pattern With Lead Shot	Pattern With Steel Shot	Mark	Best In The Area Of
★	Full	Not Recommended	○ Turkey
★★	Imp Mod	Not Recommended	○ Waterfowling
★★★	Mod	Not Recommended	○ Waterfowling, Upland Hunting
★ ★★★	Imp Cyl	Mod	○ Upland Hunting
★★ ★★★	Cyl	Imp Cyl	○ Upland Hunting



Magazine Plug:

The capacity of the shotgun that you own can be 4+1 or 7+1 but your shotgun is delivered to you as 2+1 Consumer can change the capacity of the shotgun by assembling and dismantling the wedge inside the magazine.



NO	PART NAME
1	BARREL
2	FRONT BEAD
3	BEARING BOLT
4	EJECTOR
5	RUBBER GAS RING
6	GAS PISTON WASHER
7	GAS PISTON
8	RECEIVER
9	TRACER WEDGE
10	BOLT RELEASE
11	BOLT RELEASE PIN
12	BOLT RELEASE SPRING
13	BOLT RELEASE LATCH
14	BOLT RELEASE LATCH PIN
15	BOLT RELEASE LATCH SPRING
16	TRIGGER GUARD PIN
17	TRIGGER GUARD
18	STOCK
19	BUTT PLATE
20	BUTT PLATE SCREW
21	STOCK SWIVEL STUD
22	SWIVEL
23	SWIVEL PIN
24	MAGAZINE TUBE
25	FOREARM SUPPORT RING
26	FOREARM PLATE RING
27	MAGAZINE FOLLOWER
28	MAGAZINE SPRING
29	MAGAZINE PLUG
30	FOREARM

NO	PART NAME
31	MAGAZINE CAP SPRING
32	MAGAZINE CAP PIN
33	MAGAZINE CAP SCREW
34	ACTION BAR
35	ACTION SPRING
36	SAFETY
37	SAFETY PLUNGER
38	SAFETY SPRING
39	SAFETY SPRING PLUNGER
40	CARRIER SPRING
41	CARRIER PLUNGER
42	CARRIER RETAINING PIN
43	CARRIER
44	TRIGGER ASSEMBLY PIN SLEEVE
45	TRIGGER ASSEMBLY PIN RETAINER
46	CARRIER DOG
47	CARRIER DOG PIN
48	CARRIER DOG SPRING
49	CARRIER DOG PLUNGER
50	HAMMER
51	HAMMER PLUNGER
52	HAMMER SPRING
53	SEAR
54	SEAR SPRING
55	SEAR PLUNGER
56	SEAR PIN
57	TRIGGER SPRING
58	TRIGGER
59	TRIGGER PIN
60	BREECH BOLT

NO	PART NAME
61	EXTRACTOR SPRING
62	EXTRACTOR SPRING PIN
63	EXTRACTOR
64	EXTRACTOR RETAINING PIN
65	LOCKING BLOCK
66	FIRING PIN SPRING
67	FIRING PIN
68	FIRING PIN RETAINER
69	BOLT BLOCK
70	BOLT LEVER BLOCK PIN
71	BOLT LEVER BLOCK SPRING
72	BOLT LEVER BLOCK SPRING PIN
73	OPERATING HANDLE
74	MAGAZINE CAP
75	ACTION PIPE
76	ACTION SUPPORTER
77	ACTION SUPPORTER PIN
78	STOCK BOLT
79	MAGAZINE CAP SUPPORT
80	7+1 SWIVEL
81	7+1 MAGAZINE CAP
82	MAGAZINE CAP SWIVEL HOLDER
83	ACTION TUBE
84	STOCK BOLT WASHER
85	STOCK BOLT RECEIVER
86	STOCK BOLT RING
87	MAGAZINE SPRING RETAINER
88	MAGAZINE PLUG RETAINER
89	PLUG PLATE
90	MAGAZINE CAP INTERIOR

NO	PART NAME
91	SWIVEL STUD RETAINER
92	SUPPORTER NUT
93	ACTION BAR SLEEVE
94	LOCKING HEAD
95	LOCKING HEAD PIN
96	LOCKING HEAD SPRING
97	MAGAZINE CAP SPRING
98	BARREL LUG
99	TOP RIB
100	STOCK ADJUSTMENT SHIM
101	HAMMER SAFETY
102	HAMMER SAFETY SPRING
103	HAMMER SAFETY PIN
104	MOBILE CHOKE
105	EJECTOR SPRING
106	EJECTOR SPRING PIN
107	EJECTOR PIN
108	EJECTOR RETAINING PIN 1
109	EJECTOR RETAINING PIN 2
110	HAMMER SPRING PIN
111	CARTRIDGE DROP LEVER
112	CARTRIDGE DROP LEVER SPRING PIN
113	CARTRIDGE DROP LEVER SPRING
114	STOCK ADJUSTMENT PLATE
115	STOCK SUPPORTER TUBE
116	DAMPER SPRING
117	DAMPER SPRING PLUG
118	TRIGGER PUSHING PIN
119	TRIGGER PUSHING PIN SPRING

		CAST SHIMS/CAST PLATES (mm)								
		RIGHT SHIM/RIGHT PLATE			LEFT SHIM/LEFT PLATE			NO CAST SHIM/RIGHT PLATE		
		COMB	HEEL	CAST OFF	COMB	HEEL	CAST ON	COMB	HEEL	CAST
CAST SHIMS	STANDARD	38	62	4	38	62	4	38	62	0
	U-%1	36.5	60	4	36.5	60	4	36.5	60	0
	U-%2	35	55	4	35	55	4	35	55	0
	D-%1	40	65	4	40	65	4	40	65	0
	D-%2	42	69	4	42	69	4	42	69	0

Huđlu Av Tüfekleri Kooperatifi

Huđlu Mah. Özgürlük Cad.
No: 40/A 42710
Beyşehir/Konya/Turkey

Satış Ofisi / Sales Office
T. +90 332 516 16 00
F. +90 332 516 10 31

Fabrika / Factory
T. +90 332 516 11 53 (PBX)
F. +90 332 516 10 32

   huglu.com.tr