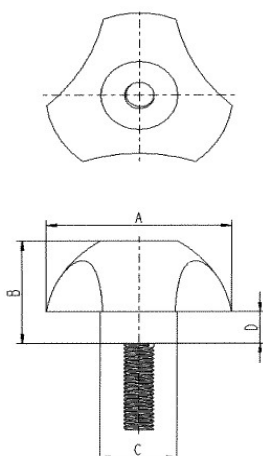


# Grupa HDB

## Pokrętła gwiazdowe

ze stalowym trzpieniem gwintowanym



**Materiał:** PA, stal

**Kolory standardowe:** czarny

Numer katalog.	Średnica gabarytowa	Wysokość uchwytu	Średnica powierzchni dociskowej	D	Wymiary gwintu
	A [mm]	B [mm]	C [mm]		
76732501	25	16,0	13,0	5,0	M4 x 15
76732502	25	16,0	13,0	5,0	M5 x 18
76732503	25	16,0	13,0	5,0	M6 x 20
76733201	32	20,0	15,0	6,0	M6 x 10
76733202	32	20,0	15,0	6,0	M6 x 20
76733203	32	20,0	15,0	6,0	M6 x 30
76733204	32	20,0	15,0	6,0	M8 x 27
76734001	40	25,0	16,0	8,0	M6 x 15
76734002	40	25,0	16,0	8,0	M6 x 20
76734003	40	25,0	16,0	8,0	M6 x 30
76734004	40	25,0	16,0	8,0	M6 x 40
76734005	40	25,0	16,0	8,0	M8 x 20
76734006	40	25,0	16,0	8,0	M8 x 33
76734007	40	25,0	16,0	8,0	M8 x 47
76734008	40	25,0	16,0	8,0	M10 x 20
76734009	40	25,0	16,0	8,0	M10 x 33
76734010	40	25,0	16,0	8,0	M10 x 44
76735001	50	31,0	21,0	9,0	M8 x 15
76735002	50	31,0	21,0	9,0	M8 x 27
76735003	50	31,0	21,0	9,0	M8 x 40
76735004	50	31,0	21,0	9,0	M10 x 33
76735005	50	31,0	21,0	9,0	M10 x 50
76736301	63	39,0	26,0	12,0	M10 x 33
76736302	63	39,0	26,0	12,0	M12 x 40