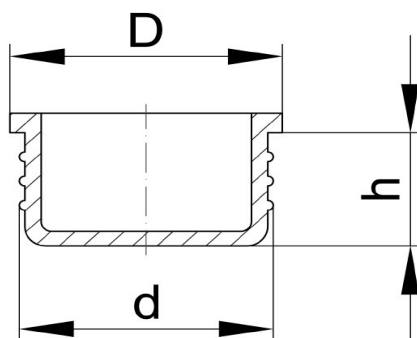


Grupa FST

Zaślepki płaskie

do gwintów wewnętrznych i otworów



Materiał: PE

Kolory standardowe: naturalny

Numer katalogowy	Gwinty metryczne	Gwinty wg DIN 13	d [mm]	D [mm]	h [mm]
------------------	------------------	------------------	--------	--------	--------

C10042	M 5		4,2	9,0	4,5
C40091		M10x1,0/M10x1,25	9,1	12,9	6,5
C40121	M 14		12,1	15,9	7,0
C40160	M 18	M17x1,0/M18x2,0	16,0	19,6	7,7
C40196		M 20 x 0,75	19,6	23,3	8,3
C50196			22,3	25,0	11,7
C40251		M 27 x 2,0	25,1	28,8	8,5
C40318		M33x1,5/M33x2,0	31,8	35,8	8,5
C40405	M 36	M42x1,5/M42x2,0	40,5	47,0	9,0
C40460	M 45	M 48 x 2,0	46,0	51,0	9,0
C40580		M60x2,0/M62x4,0	58,0	66,0	8,0
C40725	M 64	M75x3,0/M76x4,0	72,1	83,0	13,0
C41110			111,5	127,5	19,0